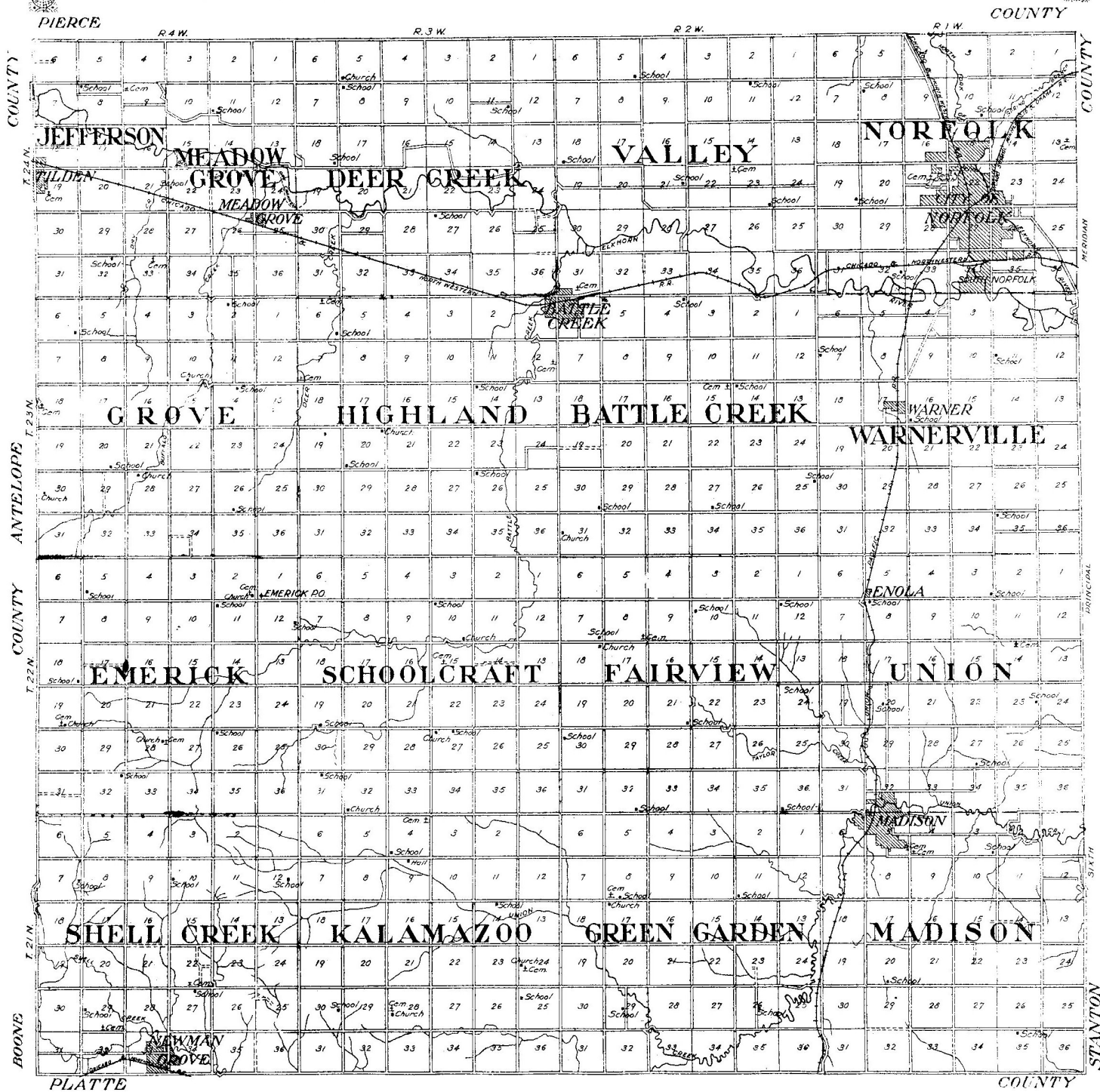


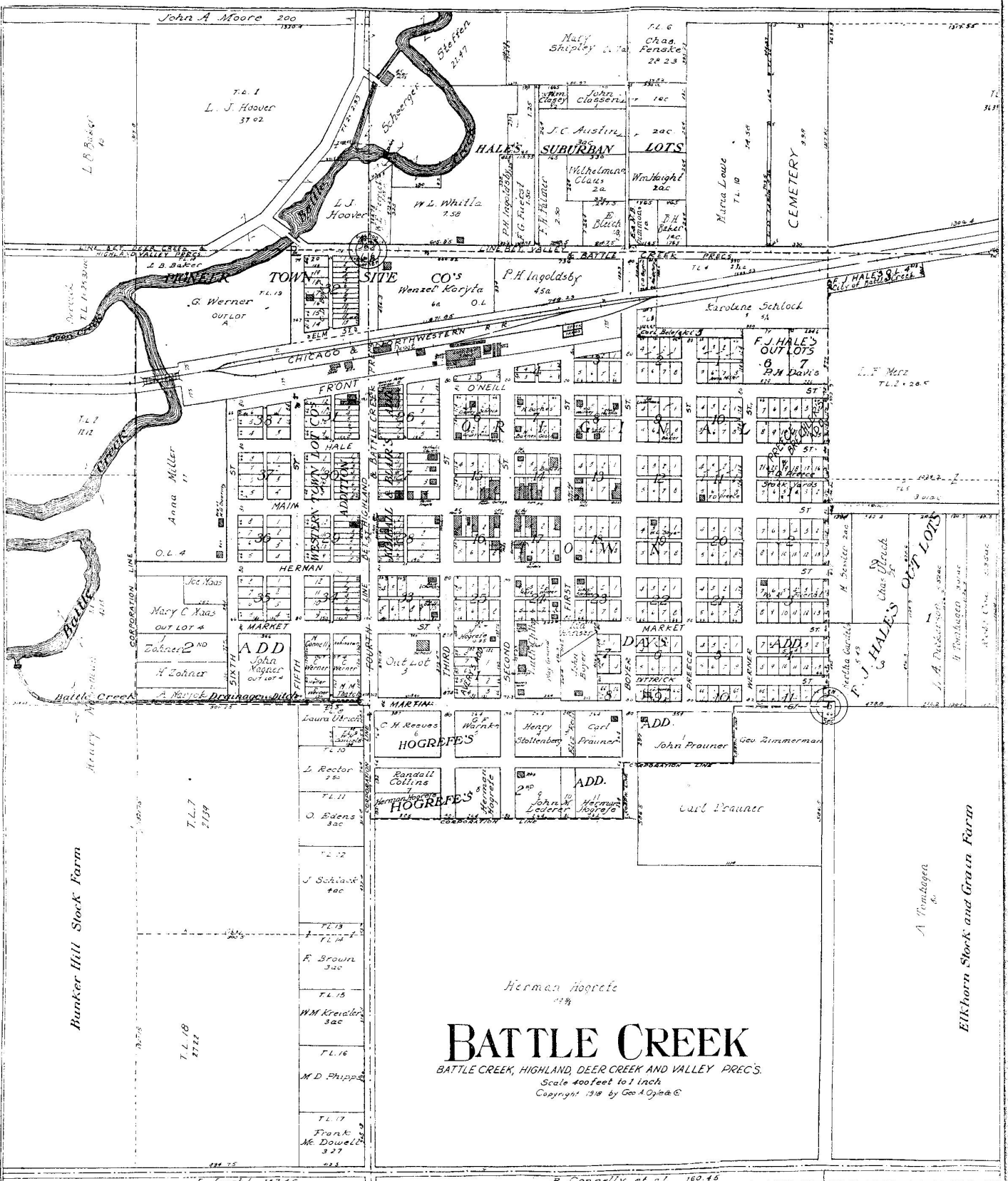
# OUTLINE MAP OF MADISON COUNTY NEBRASKA

Copyright 1918 by Geo. A. Ogle & Co.

Scale 1/80 of 1 inch to 1 mile







# BATTLE CREEK

BATTLE CREEK, HIGHLAND, DEER CREEK AND VALLEY PREC'S.  
 Scale 400 feet to 1 inch  
 Copyright 1918 by Geo A. Coyne & Co.

Banker Hill Stock Farm

Elkhorn Stock and Grain Farm

T.L. 18  
27.22

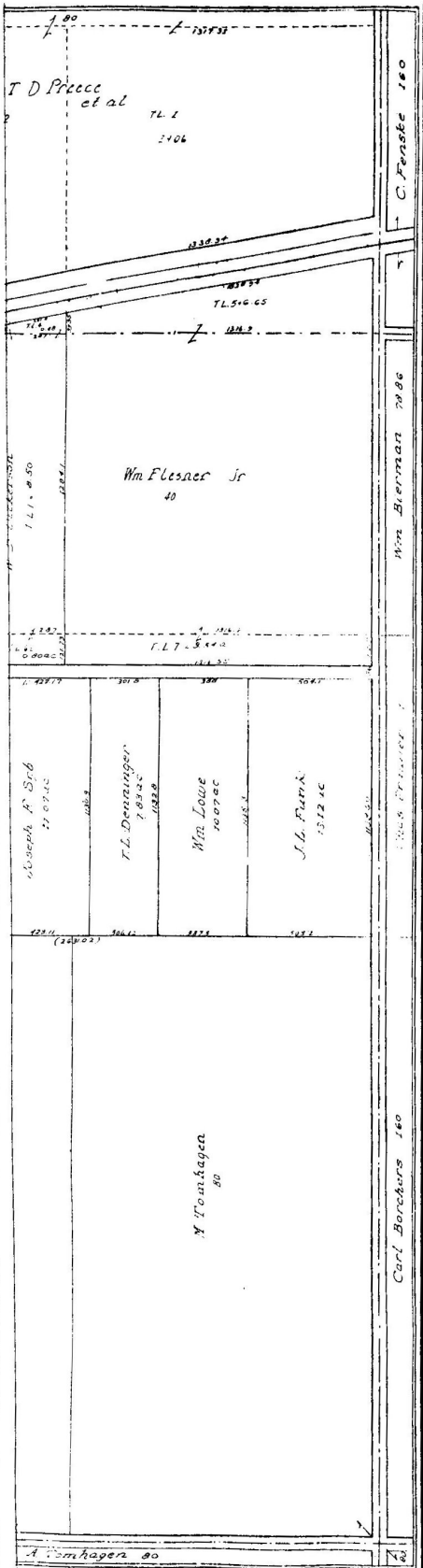
Herman Hoge  
13.8

T.L. 17  
Frank M. Dowell  
3.27

Carl Prauner

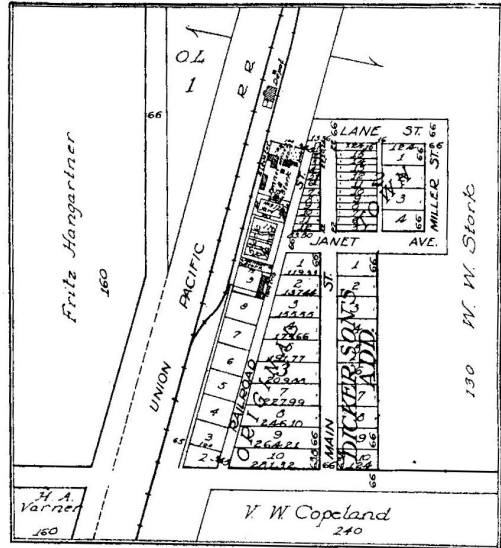
J. Lucht 18745

B. Connolly et al 160.45



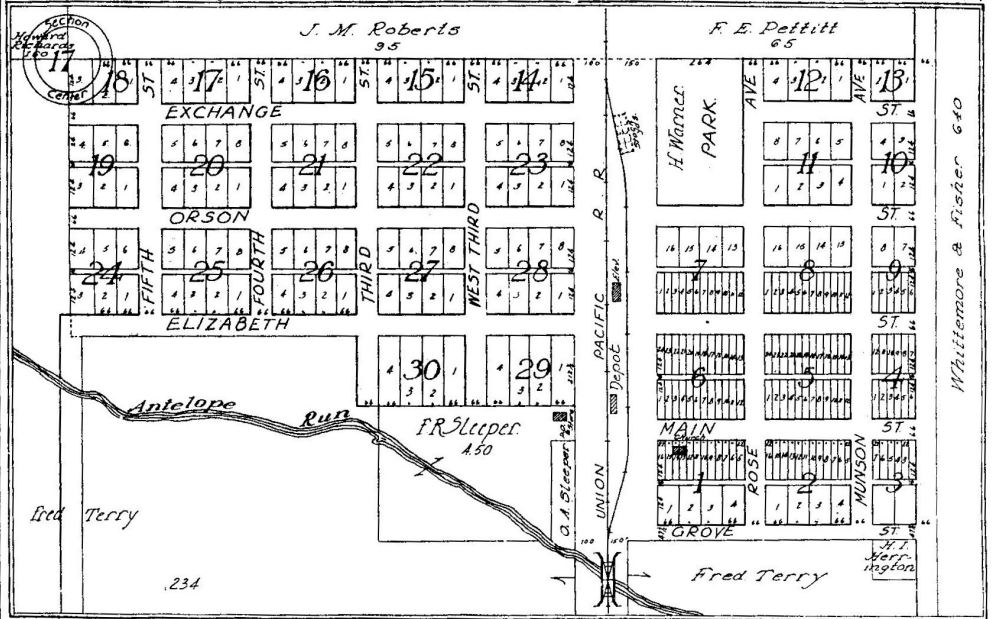
# ENOLA

UNION PREC. Located in Section 5 SCALE 300ft to 1 INCH



# WARNER

WARNERVILLE PREC. Scale 300 feet to 1 inch



**MAP OF**  
**DEER CREEK**  
 PRECINCT

Scale 2 inches to 1 mile

Township 24 North, Range 3 West of the 6th P.M.



MAP OF  
**EMERICK**  
PRECINCT

Scale 2 inches to 1 mile

Township 22 North, Range 4 West of the 6th P. M.

<b>GROVE</b>										<b>PREC</b>														
37.52	40.42	40.72	41.02	41.18	41.24	41.28	41.34	41.30	41.19	41.07	40.96	40.84	40.71	40.59	40.46	40.33	40.17	40.03	39.87	39.82	39.88	39.92	39.98	
Emma Skell	F.A. Eichberg	J.E. Bolton	Albin Frapz	Wm. Miller	A.J. Stafford	J.F. Mollhoff	John Bohlsen	Allen Horrocks	W.F. Bohlsen	Edward O. Shea	Wm. McIntosh	Wm. McIntosh	Wm. McIntosh	Wm. McIntosh	Wm. McIntosh	Wm. McIntosh	Wm. McIntosh	Wm. McIntosh	Wm. McIntosh	Wm. McIntosh	Wm. McIntosh	Wm. McIntosh	Wm. McIntosh	
6	5	4	3	2	1																			
Theo. N. Palmer	Jas. P. O'Brien	Kate O'Brien	Anna Rhoda	F.C. Ruegge	Franz Dittrick	Henry Schutt	W.G. Reeves	F.A. Peterson	Eva Ruth	Wm. McIntosh	Jas. P. O'Brien	John O'Brien	John O'Brien	John O'Brien	John O'Brien	John O'Brien	John O'Brien	John O'Brien	John O'Brien	John O'Brien	John O'Brien	John O'Brien	John O'Brien	
7	8	9	10	11	12																			
J.B. Moran	John O'Brien, Jr.	Julius Hansen	Herman Pittack	John O'Shea	C.A. Youngquist	Adam Dorr	Wm. F. Schwarz	Alfred Berg	Carl F. Berg	Jacob Holy	L.R. Larson	Anton Kempe	John Scheer	Herman Pittack	John O'Shea	Anna C. Christiansen	Adam Dorr	Jas. V. McKibbin	Henry Messin	C.E. Plass	J.W. McCallum	J.W. McCallum	J.W. McCallum	
18	17	16	15	14	13																			
L.G. Bley	B. Broberg	Geo. H. Harris	Robt. R. Williams	Sera Ostergard	Huelle Bros.	C.E. Plass	R.H. Otis	John Gleason	C.E. Plass	Edward & Jennie Broberg	E.O. Bley	CA Wallin	Fred Thur.	John Weiland	Mary Zawodsky	Frank Koperty	Arne Koperty	C. Youngquist	John Weiland	J. Otis	Ada & Kate Moran	Ella O'Shea	John Gleason	I.W. King
19	20	21	22	23	24																			
Magnus Broberg	C.J. Lindahl	Hattie Wobig	Lewis Jacobson	Irene Pat.	Anna M. Johnson et al.	Youngquist	H. Anderson	Jr. D. Kaufman	H. Schutt	Frank Odenberg	Knudt Pederson	J.B. Moran	Ottillie Keltmann	Chas. Kamrath	J. Deckert	J.E. Moran	C. Schmidt	G.N. Thiel	W.K. Colburn	G.N. Thiel	John Gleason	John Gleason	John Gleason	John Gleason
30	29	28	27	26	25																			
H. Halpenson	Aug. Hoeck	E.H. Gernhart	Mrs. A.M. Broberg	Geo. H. Gutru	Henry Klitzke	Wm. Miller	Geo. H. Gutro	I.W. King	J.S. Lewis, Jr.	Rebecca Stewart	J.D. Kaufman	J.D. Kaufman	J.D. Kaufman	J.D. Kaufman	J.D. Kaufman	J.D. Kaufman	J.D. Kaufman	J.D. Kaufman	J.D. Kaufman	J.D. Kaufman	J.D. Kaufman	J.D. Kaufman	J.D. Kaufman	J.D. Kaufman
31	32	33	34	35	36																			
John Frederick	E. Koenig	Peter Emig	Wm. Schmidt	R.M. Jacobson	H.B. Callies	Jacob J. Vaage	I.W. King	J.S. Lewis, Jr.	Solomon Samuelson	Solomon Samuelson	Solomon Samuelson	Solomon Samuelson	Solomon Samuelson	Solomon Samuelson	Solomon Samuelson	Solomon Samuelson	Solomon Samuelson	Solomon Samuelson	Solomon Samuelson	Solomon Samuelson	Solomon Samuelson	Solomon Samuelson	Solomon Samuelson	Solomon Samuelson
<b>SIUELL CREEK</b>										<b>PREC.</b>														

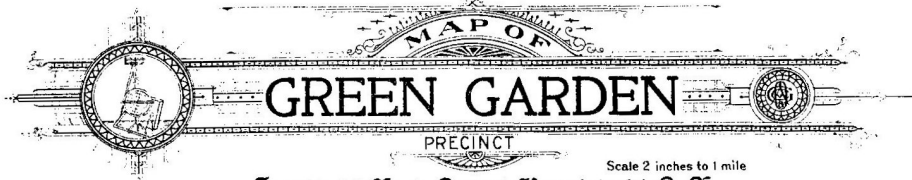
BOONE

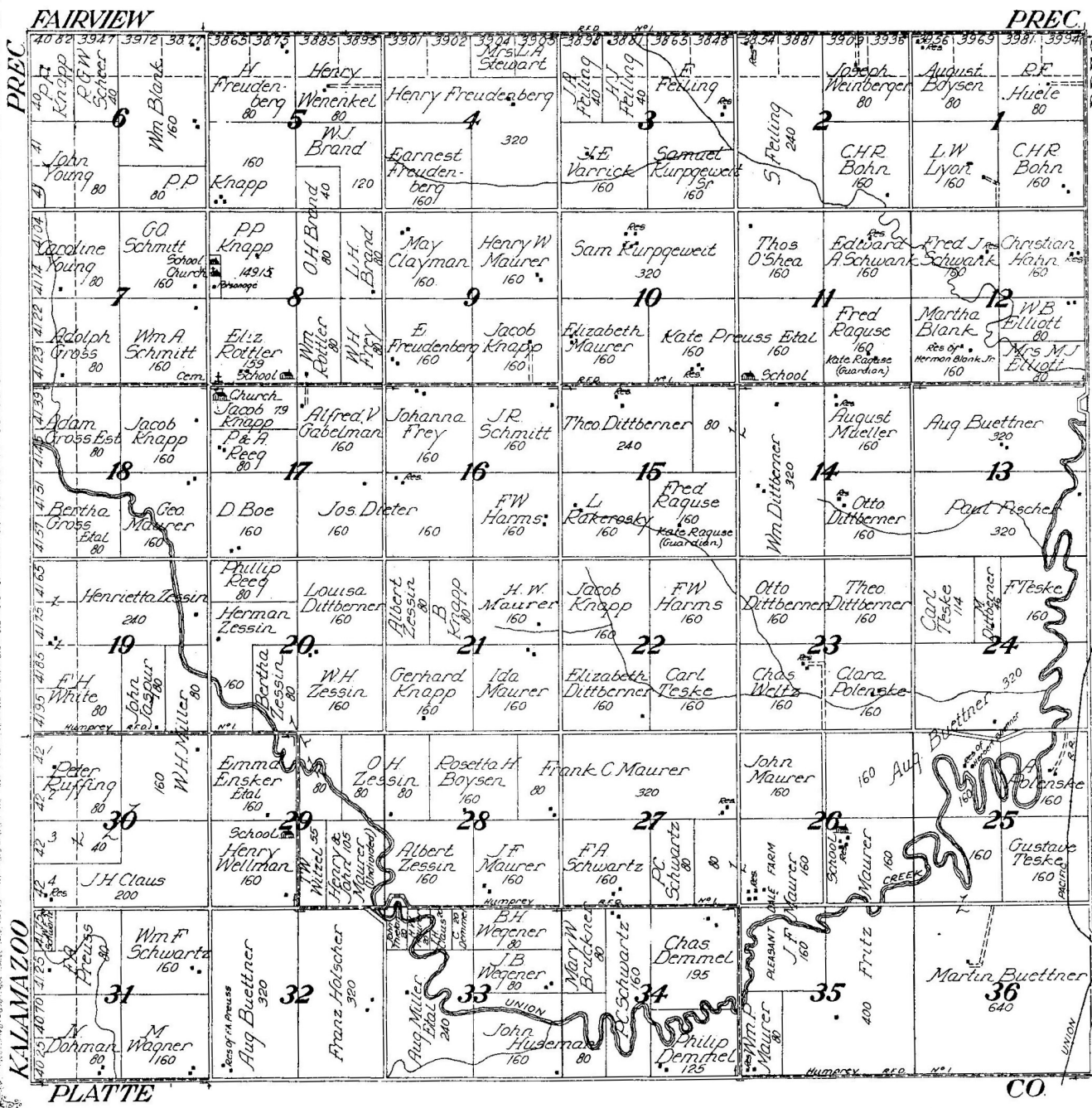
SCHOOLCRAFT

MAP OF  
**FAIRVIEW**  
PRECINCT

Scale 2 inches to 1 mile  
Township 22 North, Range 2 West of the 6th P. M.

BATTLE CREEK										PREC														
38.17, 39.48	38.12, 38.78	38.65, 38.75	38.85, 38.95	38.07, 39.23	39.37	39.53	39.59	39.56	39.54, 39.51	39.52, 39.64	39.69, 39.76	39.82, 39.88	39.93, 39.99	PREC										
Fred. Hoffmann 80	John Fraeuner 80	H.C.J. Tiedgen 80	J.M. Giltner 80	B.E. Hetrick 80	John C. Trapp 80	Chas. Trapp 40	Wm. Lauber 80	Otto V. Schaefer 40	H. Hanke 80	Henry Tiedgen 80	Charles Knoll 160	1		PREC										
6		5		4		3		2		1		1		PREC										
Fred. Hoffmann 160	Mills Duhachek 160	J.M. Giltner 80	Paul Renner 160	Tony Anderson Res. 150	John Trapp et al 160	240	Paul Renner 160	Geo. J. Mueller Est 80	John H. Anton 160	Claus Karella 160	John H. Anton 160	Thomas Pejar 480			PREC									
FA Berg 80	FR. Murphy 160	J.A. Killinger 160	J. and A. Trapp 160	W.E. Elley 160	John Trapp 160	School	Paul 80 Res.	Catherine Trapp et al 320	Renner 160	Chas. Stork 240	Wm. Breen 160	H.D. Paper 320	12		PREC									
7		8		9		10		11		12		13		PREC										
Dvorak 80	John Brosch 160	Mary Ambroz 160	B.M. Carson Est 160	S.S. Choat 80	J.S. Robinson Est. 160	Catherine Trapp 160	C.H. Stork 80	Chas. Stork 240	Chas. E. Pearse 160	Wm. Breen 160	Emma Kaul et al 160			PREC										
18		17		16		15		14		13		13		PREC										
Volk 80	Church Margt A. Davis 80	Alice May Reed 160	C.E. & J.D. Kinkle 160	B.M. Carson Est 160	E.C. Horn Est. 160	Kate Raguse 160	Geo. J. Mueller Est 160	Wm. Bartmann 80	Chas. Pearse 40	Wm. Bartmann 80	Jos. Kilpatrick 480			PREC										
19		20		21		22		23		24		25		PREC										
Mrs. Wm. Reeves 80	A.F. Reeves 160	A. Schult et al 80	Jacob Knapp 160	Mrs. Chas. Witzel 160	Aug. Volk 160	R. Kerbell 160	Wm. Bartmann 80	Roy Chittenden 80	Geo. J. Mueller Est 160	Wm. Bartmann 80	Geo. Beatty 160	Phillip Schwarz 120			PREC									
19		20		21		22		23		24		25		PREC										
Mary K. and George Reed 240	Mary Walters 80	Sara J. Moore 80	Jarrie M. Backman 80	Jacob Knapp 160	A. Imhoff 80	L.A. Stewart 160	Alice May Reed 160	Tullie K. Long 160	Jos. Ganser 80	Geo. A. Leu 160	A.L. Graves 160			PREC										
29		28		27		26		25		24		23		PREC										
Emma M. Zieslin 80	Wm. Busstead 160	Lena Hetrick 80	Mrs. John Reeves 160	Chas. H. Witzel 120	Mary Witzel Est. 160	J.W. Little 320	Taylor Valley 160	Chas. W. Sprout 160	Josephine Ganser 160	Jos. Vaurick 160	Aug. Buettner 160			PREC										
30		29		28		27		26		25		24		PREC										
Geo. Bally 120	H. Haskins 200	E. Freudenberg 320	Jacob Vaurick 160	Wm. Kurtz 80	D.J. Scheer 160	E.T. Schmidt 160	Chas. W. Sprout 160	Adam Emrich 240	John Ganser 160	W.L. Buckley Est 160	Geo. A. Leu 240			PREC										
31		32		33		34		35		36		37		PREC										
Wm. V. Scheer 80	Theo P. Scheer 160	H.F. Sunderman 160	H.F. Sunderman 160	M.P. Meisinger 160	Carl R. Schmidt 160	Fred. Meisinger 160	Carl R. Schmidt 160	F.W. Huelle 320	E.A. Lyon 160	Wm. Stork 240	Jos. Stephens 160			PREC										
31		32		33		34		35		36		37		PREC										
Robt. G.W. Scheer 80	Otto V. Scheer 160	H.G. Freudenberg 214	E.J. Moening 160	E. Freudenberg 160	Fred. Meisinger 40	Mrs. Sophia Wendt Res. of W.H. Wendt 160	F.W. Huelle 320	Anna Meisinger 160	A. Boyen 160	Ed. Schwank 160			PREC											
31		32		33		34		35		36		37		PREC										
SCHOOLCRAFT										UNION														
GREEN GARDEN										PREC.														


  
**MAP OF**  
**GREEN GARDEN**  
 PRECINCT  
 Scale 2 inches to 1 mile  
 Township 21 North, Range 2 West of the 6th P. M.





Scale 2 inches to 1 mile  
Township 23 North, Range 4 West of the 6th P. R.

JEFFERSON		PRECINCT MEADOW GROVE										PREC.											
3710	3787	3778	3764	3768	3778	3786	3796	3799	3796	3794	3791	3795	4004	4014	4023	4015	3798	3962	3935	3932	3951	3971	3990
Fleming	MA Grubb	Chas A Gabelman	L.A. Stewart	J.E. Murray	L.A. Stuart	Walters	J. Rupp	J. Rupp	J. Rupp	J. Rupp	J. Rupp	J. Rupp	J. Rupp	J. Rupp	J. Rupp	J. Rupp	J. Rupp	J. Rupp	J. Rupp	J. Rupp	J. Rupp	J. Rupp	J. Rupp
6	J.H.B. Wagner	B.A. Grubb	John Fillmer	Gustav Wauer	V.E. Hanson	E. Fott	Wm. F. Schulz	T. Evans	E.L. McIntosh	W.S. Crook	D.P. Sullivan	Lucy R. Hatley											
7	Aug & Henry Oetzel	Frank Wauer	J.H.B. Wagner	G. Wauer	V.E. Hanson	A.M. Whitehorn	W.W. Brown	Burtis Johnson	A.W. Goldsworthy	L.A. Hansen	Wm. H. Palmer												
8	Clara M. Wolf	Jos. Karabel	J.T. Greer	Gottfried Schultz	Emma L. Blair	O.W. Johnson	C.S. Snyder	A.C. Williams	E.K. Horn	Geo. F. De Camp	Jas. T. Moore												
9	Aug & Chas. Delsigle	Edw. E. Cople	J.M. Dawson	Aug. Reikofski	S.M. Switzer	S. Williams	Wm. Hayden	Z. Jones	Henry Lienz	F.J. Fichter	Gustav Rathke												
10	Clara M. Wolf	L.A. Stuart	J.T. Greer	Edw. E. Cople	Aug. Reikofski	S.M. Switzer	S. Williams	Wm. Hayden	Z. Jones	Henry Lienz	F.J. Fichter	Gustav Rathke											
11	Aug & Chas. Delsigle	Edw. E. Cople	J.M. Dawson	Aug. Reikofski	S.M. Switzer	S. Williams	Wm. Hayden	Z. Jones	Henry Lienz	F.J. Fichter	Gustav Rathke												
12	Clara M. Wolf	L.A. Stuart	J.T. Greer	Edw. E. Cople	Aug. Reikofski	S.M. Switzer	S. Williams	Wm. Hayden	Z. Jones	Henry Lienz	F.J. Fichter	Gustav Rathke											
13	Aug & Chas. Delsigle	Edw. E. Cople	J.M. Dawson	Aug. Reikofski	S.M. Switzer	S. Williams	Wm. Hayden	Z. Jones	Henry Lienz	F.J. Fichter	Gustav Rathke												
14	Clara M. Wolf	L.A. Stuart	J.T. Greer	Edw. E. Cople	Aug. Reikofski	S.M. Switzer	S. Williams	Wm. Hayden	Z. Jones	Henry Lienz	F.J. Fichter	Gustav Rathke											
15	Aug & Chas. Delsigle	Edw. E. Cople	J.M. Dawson	Aug. Reikofski	S.M. Switzer	S. Williams	Wm. Hayden	Z. Jones	Henry Lienz	F.J. Fichter	Gustav Rathke												
16	Clara M. Wolf	L.A. Stuart	J.T. Greer	Edw. E. Cople	Aug. Reikofski	S.M. Switzer	S. Williams	Wm. Hayden	Z. Jones	Henry Lienz	F.J. Fichter	Gustav Rathke											
17	Aug & Chas. Delsigle	Edw. E. Cople	J.M. Dawson	Aug. Reikofski	S.M. Switzer	S. Williams	Wm. Hayden	Z. Jones	Henry Lienz	F.J. Fichter	Gustav Rathke												
18	Clara M. Wolf	L.A. Stuart	J.T. Greer	Edw. E. Cople	Aug. Reikofski	S.M. Switzer	S. Williams	Wm. Hayden	Z. Jones	Henry Lienz	F.J. Fichter	Gustav Rathke											
19	Aug & Chas. Delsigle	Edw. E. Cople	J.M. Dawson	Aug. Reikofski	S.M. Switzer	S. Williams	Wm. Hayden	Z. Jones	Henry Lienz	F.J. Fichter	Gustav Rathke												
20	Clara M. Wolf	L.A. Stuart	J.T. Greer	Edw. E. Cople	Aug. Reikofski	S.M. Switzer	S. Williams	Wm. Hayden	Z. Jones	Henry Lienz	F.J. Fichter	Gustav Rathke											
21	Aug & Chas. Delsigle	Edw. E. Cople	J.M. Dawson	Aug. Reikofski	S.M. Switzer	S. Williams	Wm. Hayden	Z. Jones	Henry Lienz	F.J. Fichter	Gustav Rathke												
22	Clara M. Wolf	L.A. Stuart	J.T. Greer	Edw. E. Cople	Aug. Reikofski	S.M. Switzer	S. Williams	Wm. Hayden	Z. Jones	Henry Lienz	F.J. Fichter	Gustav Rathke											
23	Aug & Chas. Delsigle	Edw. E. Cople	J.M. Dawson	Aug. Reikofski	S.M. Switzer	S. Williams	Wm. Hayden	Z. Jones	Henry Lienz	F.J. Fichter	Gustav Rathke												
24	Clara M. Wolf	L.A. Stuart	J.T. Greer	Edw. E. Cople	Aug. Reikofski	S.M. Switzer	S. Williams	Wm. Hayden	Z. Jones	Henry Lienz	F.J. Fichter	Gustav Rathke											
25	Aug & Chas. Delsigle	Edw. E. Cople	J.M. Dawson	Aug. Reikofski	S.M. Switzer	S. Williams	Wm. Hayden	Z. Jones	Henry Lienz	F.J. Fichter	Gustav Rathke												
26	Clara M. Wolf	L.A. Stuart	J.T. Greer	Edw. E. Cople	Aug. Reikofski	S.M. Switzer	S. Williams	Wm. Hayden	Z. Jones	Henry Lienz	F.J. Fichter	Gustav Rathke											
27	Aug & Chas. Delsigle	Edw. E. Cople	J.M. Dawson	Aug. Reikofski	S.M. Switzer	S. Williams	Wm. Hayden	Z. Jones	Henry Lienz	F.J. Fichter	Gustav Rathke												
28	Clara M. Wolf	L.A. Stuart	J.T. Greer	Edw. E. Cople	Aug. Reikofski	S.M. Switzer	S. Williams	Wm. Hayden	Z. Jones	Henry Lienz	F.J. Fichter	Gustav Rathke											
29	Aug & Chas. Delsigle	Edw. E. Cople	J.M. Dawson	Aug. Reikofski	S.M. Switzer	S. Williams	Wm. Hayden	Z. Jones	Henry Lienz	F.J. Fichter	Gustav Rathke												
30	Clara M. Wolf	L.A. Stuart	J.T. Greer	Edw. E. Cople	Aug. Reikofski	S.M. Switzer	S. Williams	Wm. Hayden	Z. Jones	Henry Lienz	F.J. Fichter	Gustav Rathke											
31	Aug & Chas. Delsigle	Edw. E. Cople	J.M. Dawson	Aug. Reikofski	S.M. Switzer	S. Williams	Wm. Hayden	Z. Jones	Henry Lienz	F.J. Fichter	Gustav Rathke												
32	Clara M. Wolf	L.A. Stuart	J.T. Greer	Edw. E. Cople	Aug. Reikofski	S.M. Switzer	S. Williams	Wm. Hayden	Z. Jones	Henry Lienz	F.J. Fichter	Gustav Rathke											
33	Aug & Chas. Delsigle	Edw. E. Cople	J.M. Dawson	Aug. Reikofski	S.M. Switzer	S. Williams	Wm. Hayden	Z. Jones	Henry Lienz	F.J. Fichter	Gustav Rathke												
34	Clara M. Wolf	L.A. Stuart	J.T. Greer	Edw. E. Cople	Aug. Reikofski	S.M. Switzer	S. Williams	Wm. Hayden	Z. Jones	Henry Lienz	F.J. Fichter	Gustav Rathke											
35	Aug & Chas. Delsigle	Edw. E. Cople	J.M. Dawson	Aug. Reikofski	S.M. Switzer	S. Williams	Wm. Hayden	Z. Jones	Henry Lienz	F.J. Fichter	Gustav Rathke												
36	Clara M. Wolf	L.A. Stuart	J.T. Greer	Edw. E. Cople	Aug. Reikofski	S.M. Switzer	S. Williams	Wm. Hayden	Z. Jones	Henry Lienz	F.J. Fichter	Gustav Rathke											

ANTELOPE

HIGHLAND

EMERICK

PREC.

# MAP OF HIGHLAND

PRECINCT

Scale 2 inches to 1 mile

Township 23 North, Range 3 West of the 6th P.M.



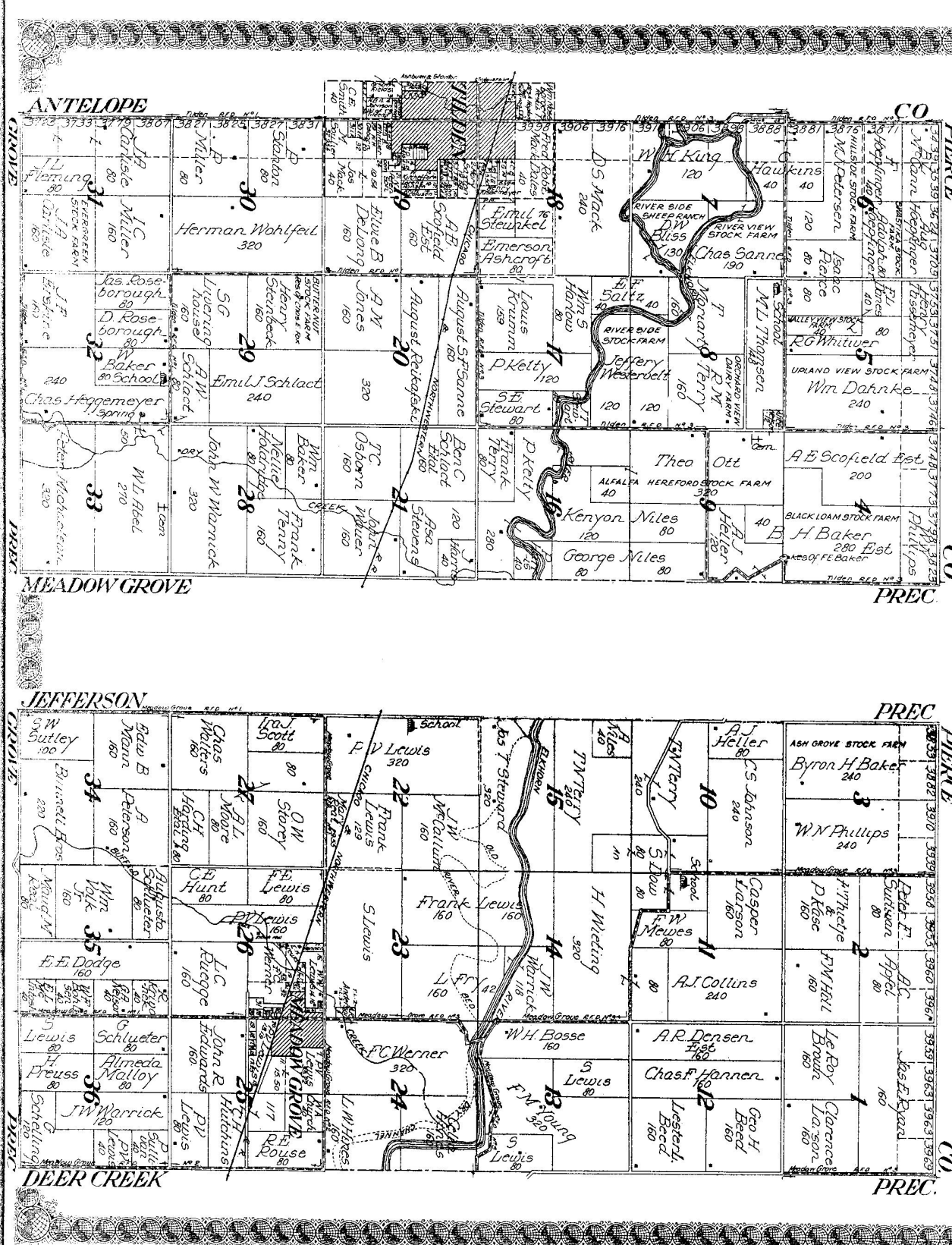
SCHOOLCRAFT

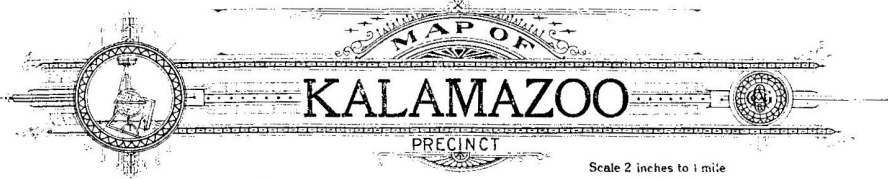
PREC.

JEFFERSON  
MEADOW GROVE

Part of Township 24 North, Range 4 West of the 6th S. 9E.  
Scale 2 inches to 1 mile

Part of Township 24 North, Range 4 West of the 6th S. 9E.  
Scale 2 inches to 1 mile




  
**MAP OF**  
**KALAMAZOO**  
 PRECINCT

Scale 2 inches to 1 mile

Township 21 North, Range 3 West of the 6th P.M.

SCHOOLCRAFT

PREC.

TWP

SHELL CREEK

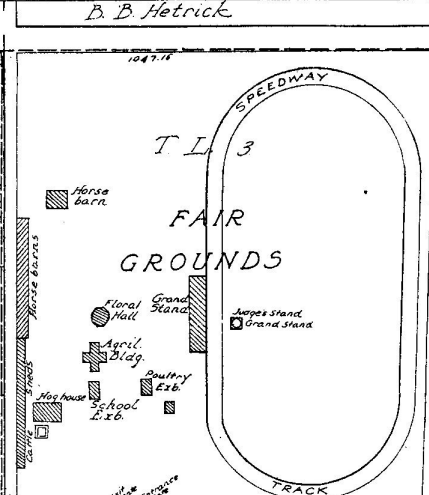
GREEN GARDEN

39.71 Kaufman 40	39.32 Lillie A Stuart 80	38.38, 38.42 F. Pospisil 120	39.66, 39.59 Henry 240	39.51, 39.54 Anna Christian 80	39.35, 39.32 Mrs. Rose 80	39.28, 39.22 M. 80	39.30, 39.50 John 80	39.70, 39.90 Bertha K. 80	40.00, 40.00 John 80	40.00, 40.00 Chas. Kamrath 80	40.00, 40.00 Caroline Kamrath 80
39.52 Gerhardt Knapp 160	39.39, 39.76 Valley Grove Farm 160	39.14, 39.61 Jos Brosch 200	39.66, 39.59 Wedekind 240	39.51, 39.54 Danl. Gross 160	39.35, 39.32 Anton Kasik 160	39.28, 39.22 Iona Valley Farm 160	39.30, 39.50 John F. Duorak 160	39.70, 39.90 John Knapp 160	40.00, 40.00 Andrew Kammer 320	40.00, 40.00 Chas. Kamrath 80	40.00, 40.00 Caroline Kamrath 80
39.47, 39.49 Frank Storek 160	39.39, 39.76 Wm. Filsinger 160	39.14, 39.61 Adam Seip 160	39.66, 39.59 Fred Gabelman 160	39.51, 39.54 Joseph Choutka 240	39.35, 39.32 Celia Brand 80	39.28, 39.22 Pleasant View Farm 160	39.30, 39.50 Dorothea Scheer 160	39.70, 39.90 John Knapp 160	40.00, 40.00 Anna K. 160	40.00, 40.00 Zessin 160	40.00, 40.00 Julius Knapp 160
39.52, 39.65 Otto Kamrath 80	39.39, 39.76 Emma Meier 160	39.14, 39.61 Otto Kamrath 160	39.66, 39.59 Peter Classen 160	39.51, 39.54 Sr. 240	39.35, 39.32 John Mack 80	39.28, 39.22 Peter Classen 160	39.30, 39.50 Otto Dittberner 80	39.70, 39.90 P. J. Maurer 120	40.00, 40.00 Anna K. 160	40.00, 40.00 Zessin 160	40.00, 40.00 Julius Knapp 160
39.71, 39.73 Albert Kamrath 240	39.39, 39.76 Herman Kamrath 160	39.14, 39.61 Herman Kamrath 160	39.66, 39.59 Frank Dvorak 320	39.51, 39.54 F. P. Schmidt 160	39.35, 39.32 Adolph Mack 80	39.28, 39.22 Union Otto Dittberner 160	39.30, 39.50 School	39.70, 39.90 C. D. Jenkins 320	40.00, 40.00 Wm. Schmitt 80	40.00, 40.00 Wm. Schmitt 80	40.00, 40.00 Wm. Schmitt 80
39.52, 39.65 Mrs. A. S. Walgin 80	39.39, 39.76 Ferdinand Kamrath 160	39.14, 39.61 Otto Kamrath 160	39.66, 39.59 Wm. H. Rottler 160	39.51, 39.54 Wm. H. Rottler 160	39.35, 39.32 Gladys J. Schmidt 160	39.28, 39.22 Elizabeth A. Jenkins 160	39.30, 39.50 L. A. Jenkins 160	39.70, 39.90 C. D. Jenkins 320	40.00, 40.00 J. & H. Engelhardt 320	40.00, 40.00 H. White 120	40.00, 40.00 P. Gross 80
39.52, 39.65 Mary Hooges 160	39.39, 39.76 Mrs. Henry Naber 240	39.14, 39.61 Henry Reiche 80	39.66, 39.59 Jos. Widham 260	39.51, 39.54 H. L. Super 160	39.35, 39.32 John Huseman 160	39.28, 39.22 Ernest Nathan 160	39.30, 39.50 Joseph Stibely 220	39.70, 39.90 H. C. Kohl 160	40.00, 40.00 F. H. White Sr. 160	40.00, 40.00 John Frisch 160	40.00, 40.00 John Frisch 160
39.52, 39.65 Kate Reiche 160	39.39, 39.76 Fairview Farm 160	39.14, 39.61 Herman Johnson 160	39.66, 39.59 Anna F. Robertson 320	39.51, 39.54 H. L. Super 160	39.35, 39.32 Jos. Super, Jr. 160	39.28, 39.22 Fred Super 160	39.30, 39.50 H. F. Nathan 100	39.70, 39.90 Frank Pase 160	40.00, 40.00 Edward Kohl 160	40.00, 40.00 Chas. F. W. Kohl 160	40.00, 40.00 Chas. F. W. Kohl 160
39.71, 39.73 C. M. Silso 80	39.39, 39.76 Sol. Samuelson 160	39.14, 39.61 Charles Kamrath 160	39.66, 39.59 M. Classen 160	39.51, 39.54 M. Classen 160	39.35, 39.32 Frank Super 320	39.28, 39.22 Julian Nathan 160	39.30, 39.50 H. Nathan 160	39.70, 39.90 Broder Boyser 80	40.00, 40.00 Otto H. 240	40.00, 40.00 Peter Ruffing 160	40.00, 40.00 Gross 160
39.52, 39.65 Wm. Oberhauser 160	39.39, 39.76 J. H. Johnson 160	39.14, 39.61 A. C. Eucker 160	39.66, 39.59 Fred Loeffler 160	39.51, 39.54 Aug. Weaver 160	39.35, 39.32 Kate Engelke 160	39.28, 39.22 John Moseke 160	39.30, 39.50 H. Blank 160	39.70, 39.90 Minnie Nathan 160	40.00, 40.00 Otto H. 240	40.00, 40.00 Peter Ruffing 160	40.00, 40.00 Gross 160
39.71, 39.73 G. Geilenkircher 160	39.39, 39.76 J. H. Johnson 160	39.14, 39.61 A. C. Eucker 160	39.66, 39.59 M. S. Whitney 160	39.51, 39.54 John Huseman 320	39.35, 39.32 John Moseke 160	39.28, 39.22 John Moseke 160	39.30, 39.50 Mrs. Louise Fosse 160	39.70, 39.90 C. Dohman 80	40.00, 40.00 Ernst Nathan 200	40.00, 40.00 N. Dohman 180	40.00, 40.00 N. Dohman 180
39.52, 39.65 Wm. Roufs 160	39.39, 39.76 Ferdinand Kamrath 160	39.14, 39.61 Otto Eucker 160	39.66, 39.59 J. C. Beller 160	39.51, 39.54 John Huseman 320	39.35, 39.32 J. W. Kamacker 160	39.28, 39.22 Frank Albrecht 160	39.30, 39.50 Julius Nathan 160	39.70, 39.90 F. A. Stenger 160	40.00, 40.00 Minnie Nathan 80	40.00, 40.00 J. M. Cook 120	40.00, 40.00 Chris Dohman 40

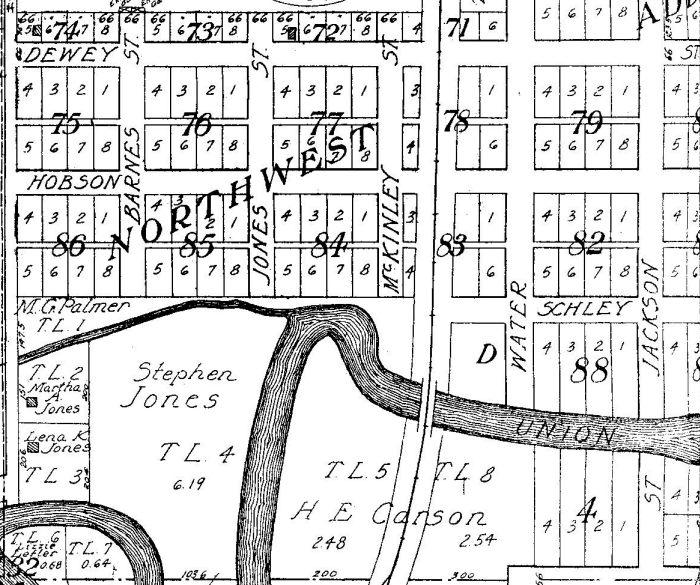
PLATTE

CO.

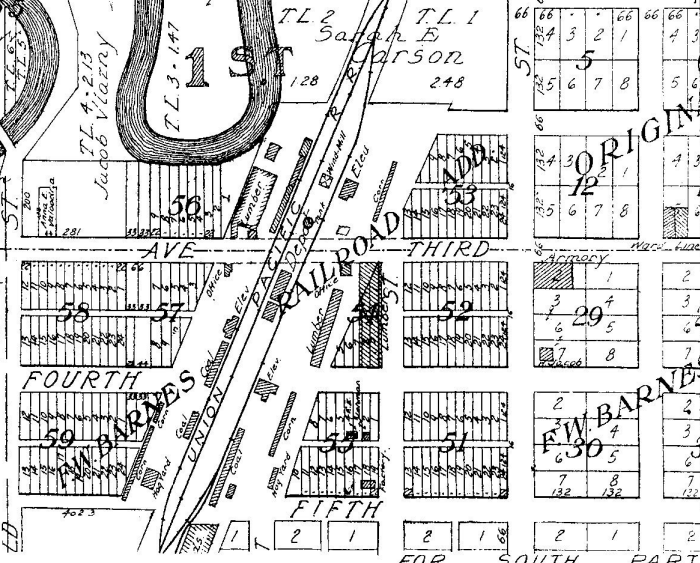
Jos. Stephens 245.92  
 Wm. Stork 80  
 T.L. 1  
 Geo. W. Dorr  
**NORTH PART OF**  
**MADISON**  
 COUNTY SEAT OF MADISON CO., NEB.  
 Copyright 1918 by Geo. A. Ogle & Co.  
 Scale 250 feet to 1 inch. T.L. 2  
 Geo. W. Dorr  
 Geo. W. Dorr (63)



T.L. 2  
 T.L. 3  
 B. Maria Galpin  
 T.L. 3 = 3.50  
 T.L. 4 = 3.50  
 H. Petersen  
 40

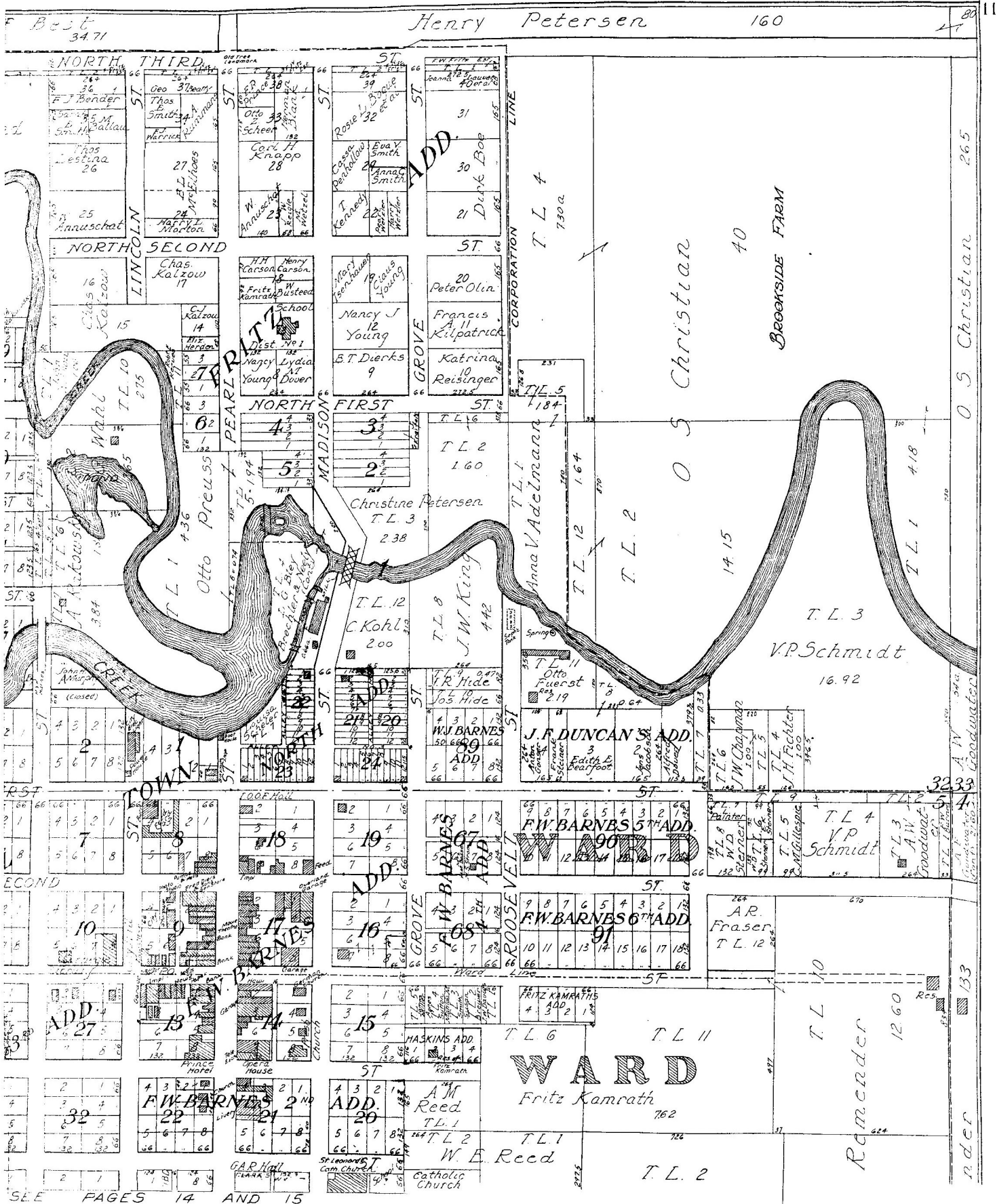


Jos. Lieber  
 Jos. Ziegler Est. 20  
 J. Studts  
 T.L. 3.14  
 T.L. 2.14  
 N.H. Ray  
 T.L. 4.213  
 T.L. 3.147  
 T.L. 1 ST



WEST SIDE  
 J. Lieber  
 3  
 Hans Ketelson  
 11, 12, 13, 14, 15, 16  
 B. Knapp  
 13, 14  
 Eliz. Feilung, et al

FOR SOUTH PART  
 1, 2, 3, 4, 5, 6, 7, 8, 9, 10, 11, 12, 13, 14, 15, 16, 17, 18, 19, 20, 21, 22, 23, 24, 25, 26, 27, 28, 29, 30, 31, 32, 33, 34, 35, 36, 37, 38, 39, 40, 41, 42, 43, 44, 45, 46, 47, 48, 49, 50, 51, 52, 53, 54, 55, 56, 57, 58, 59, 60, 61, 62, 63, 64, 65, 66, 67, 68, 69, 70, 71, 72, 73, 74, 75, 76, 77, 78, 79, 80, 81, 82, 83, 84, 85, 86, 87, 88, 89, 90, 91, 92, 93, 94, 95, 96, 97, 98, 99, 100

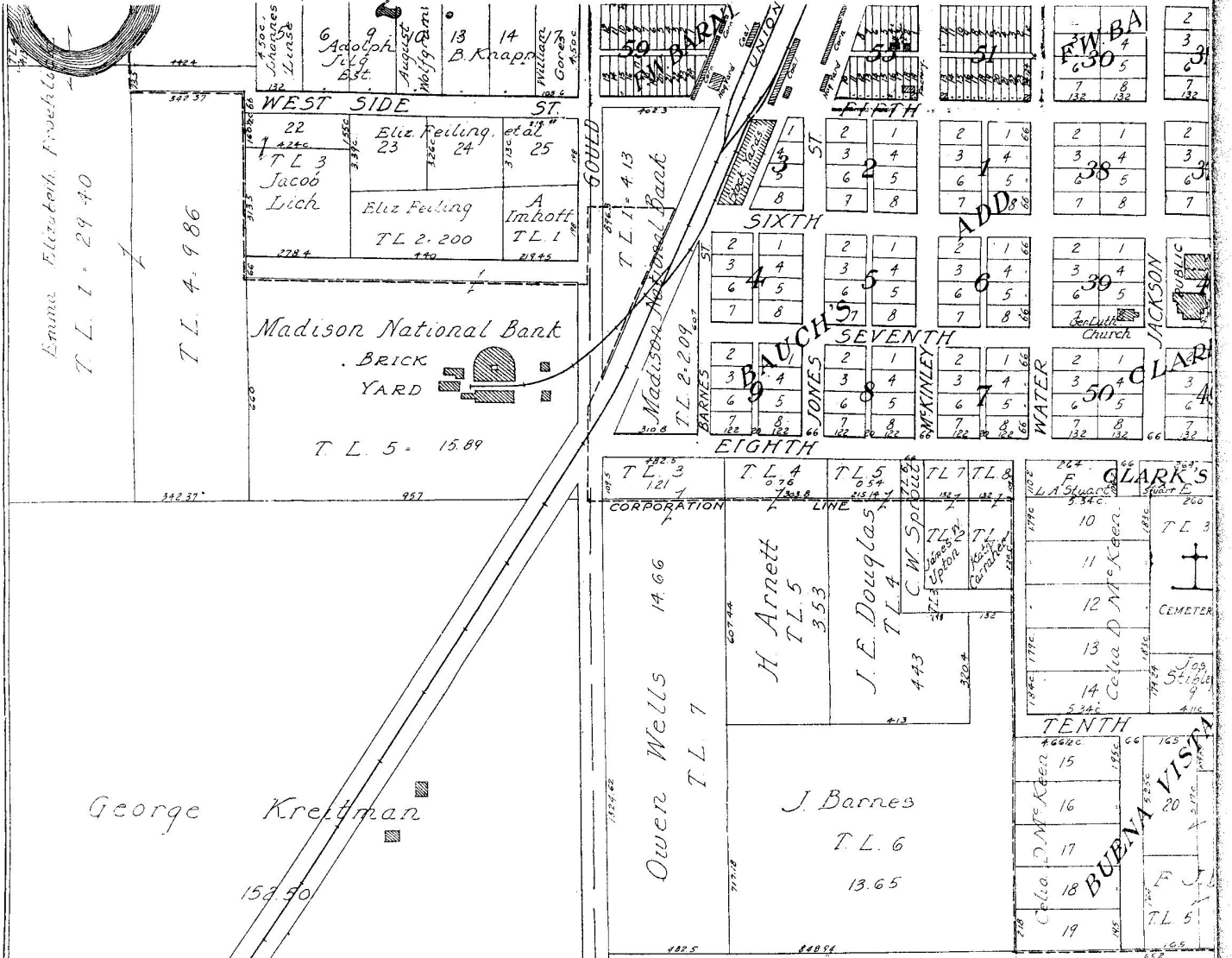


SEE PAGES 14 AND 15

Best 3471  
 Henry Petersen 160  
 265  
 265  
 0 5 Christian  
 265  
 3233  
 133  
 nder

FOR NORTH PART SEE

14



SOUTH PART OF  
**MADISON**

Saml. Kurpgeweit

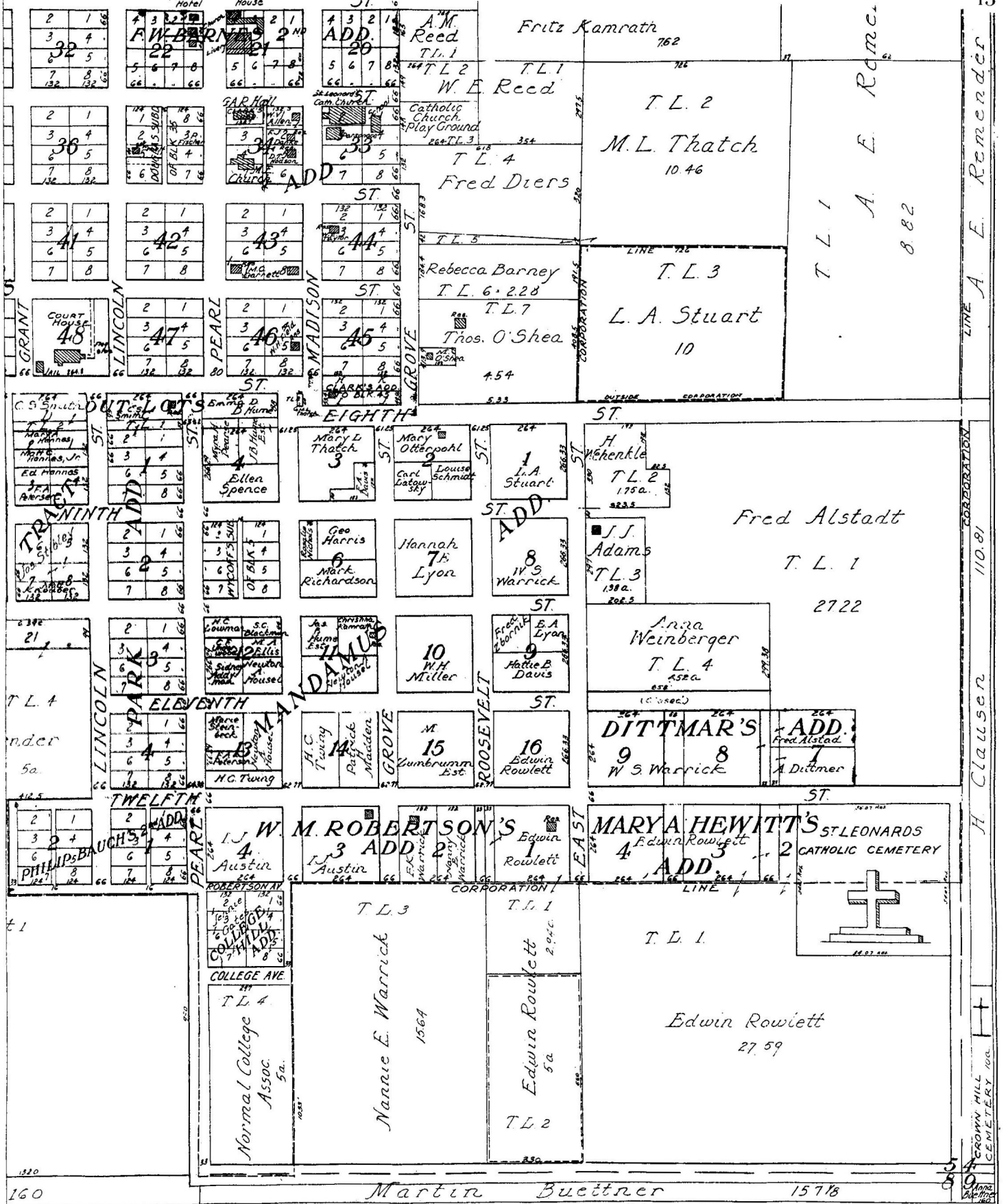
COUNTY SEAT OF MADISON CO., NEB.  
Copyright 1918 by Geo. A. Ogle & Co.  
Scale 250 feet to 1 inch.

J. J. Mattison

80

78

F. K. Warrick





# MADISON

PRECINCT

Scale 2 inches to 1 mile

Township 21 North, Range 1 West of the 6th P. M.



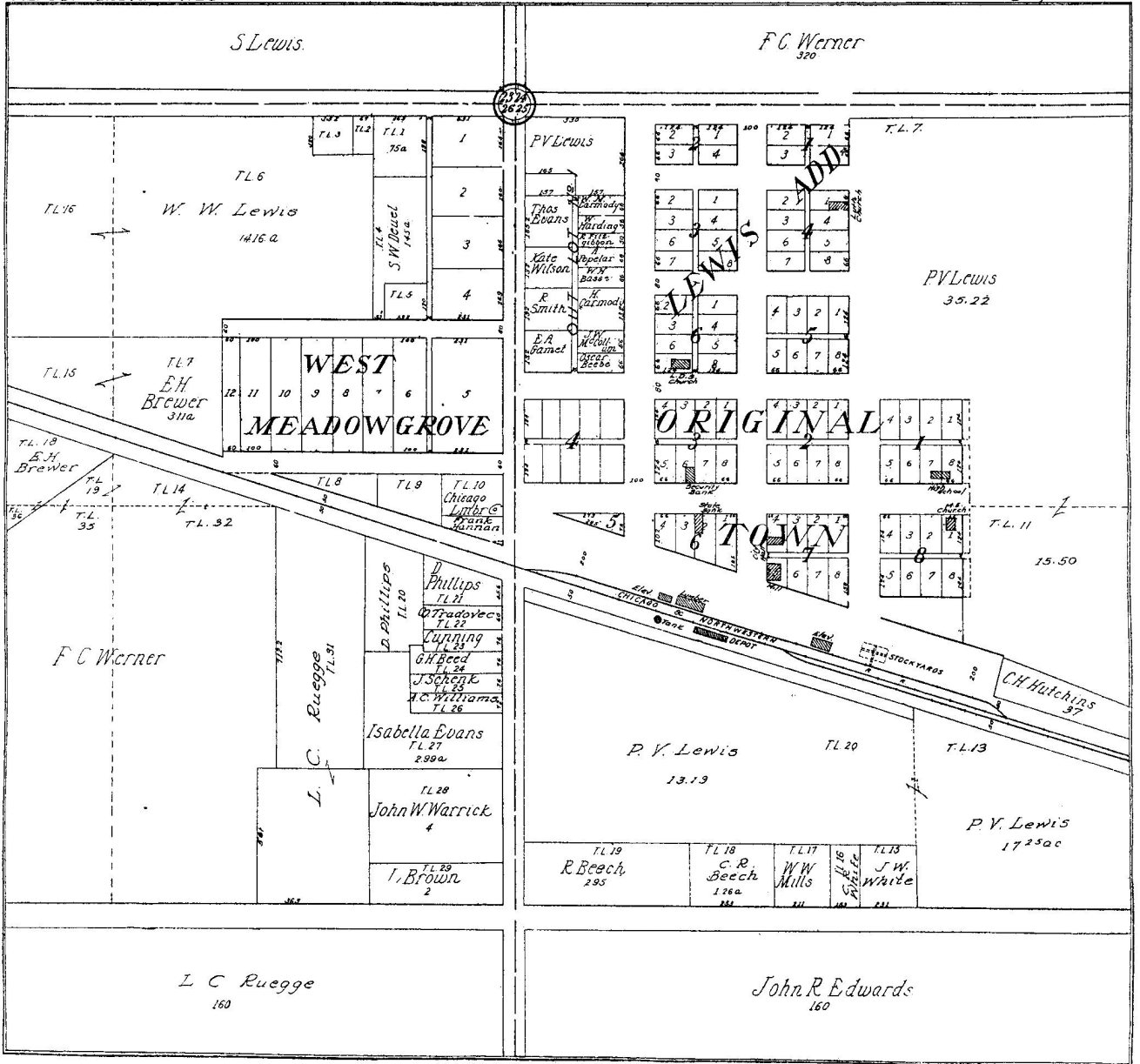
PLATTE

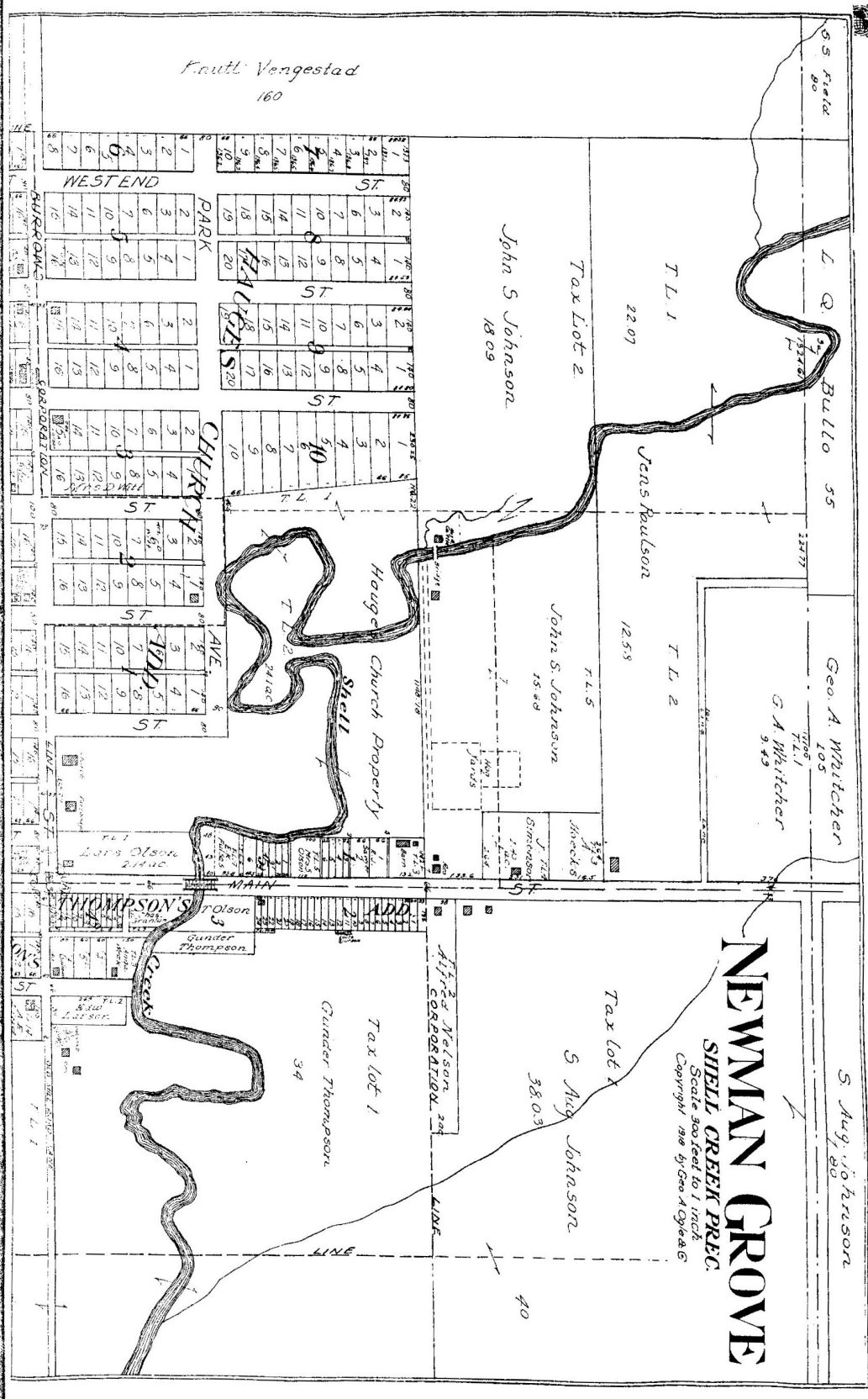
CO.

# MEADOW GROVE

MEADOW GROVE PREC.

Scale 300feet=1inch





Knuttl Vengestad  
160

John S Johnson  
1809

Tax Lot 2

2207

T L 1

Jens Paulson

1258

T L 2

John S. Johnson  
1588

Geo. A. Whitcher  
105

G A Whitcher  
943

Hanger Church Property  
Shell

# NEWMAN GROVE

SHELL CREEK PREC.  
Scale 300 feet to 1 inch  
Copyright 1916 by Geo. A. Ogden & Co.

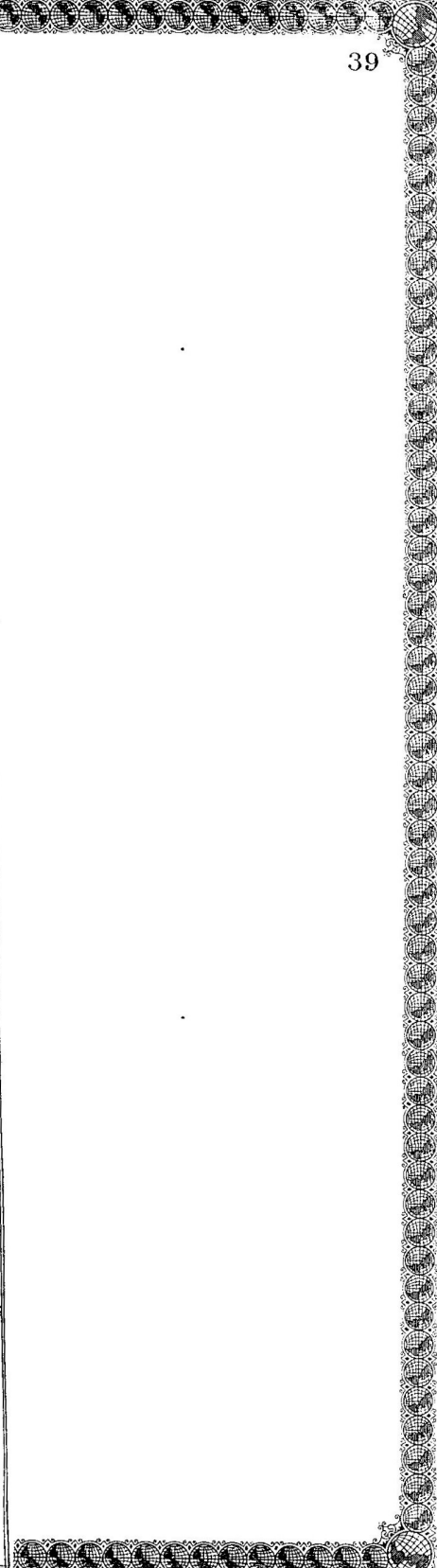
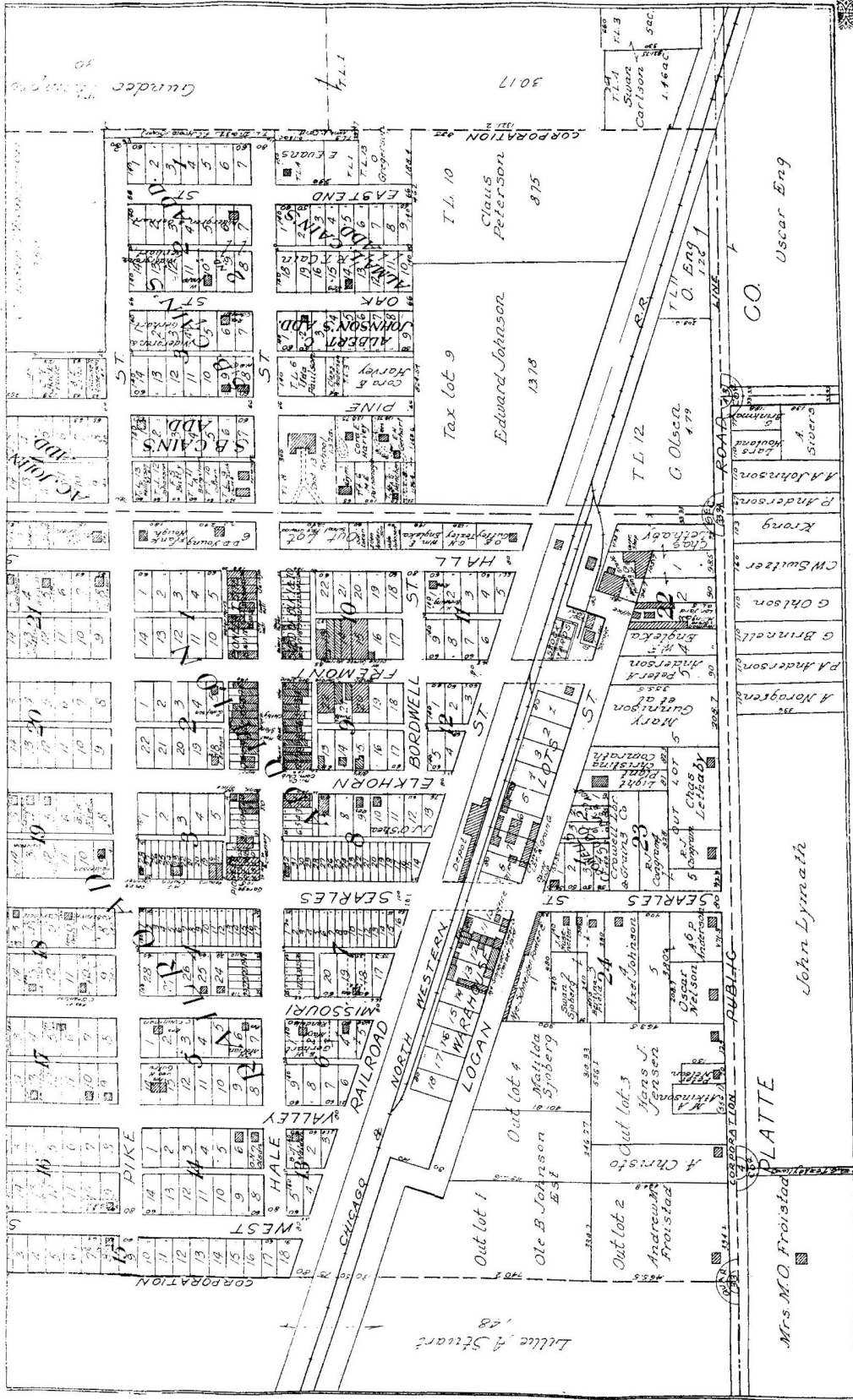
Tax lot 1  
5 Aug Johnson  
380.3

Gunder Thompson  
34

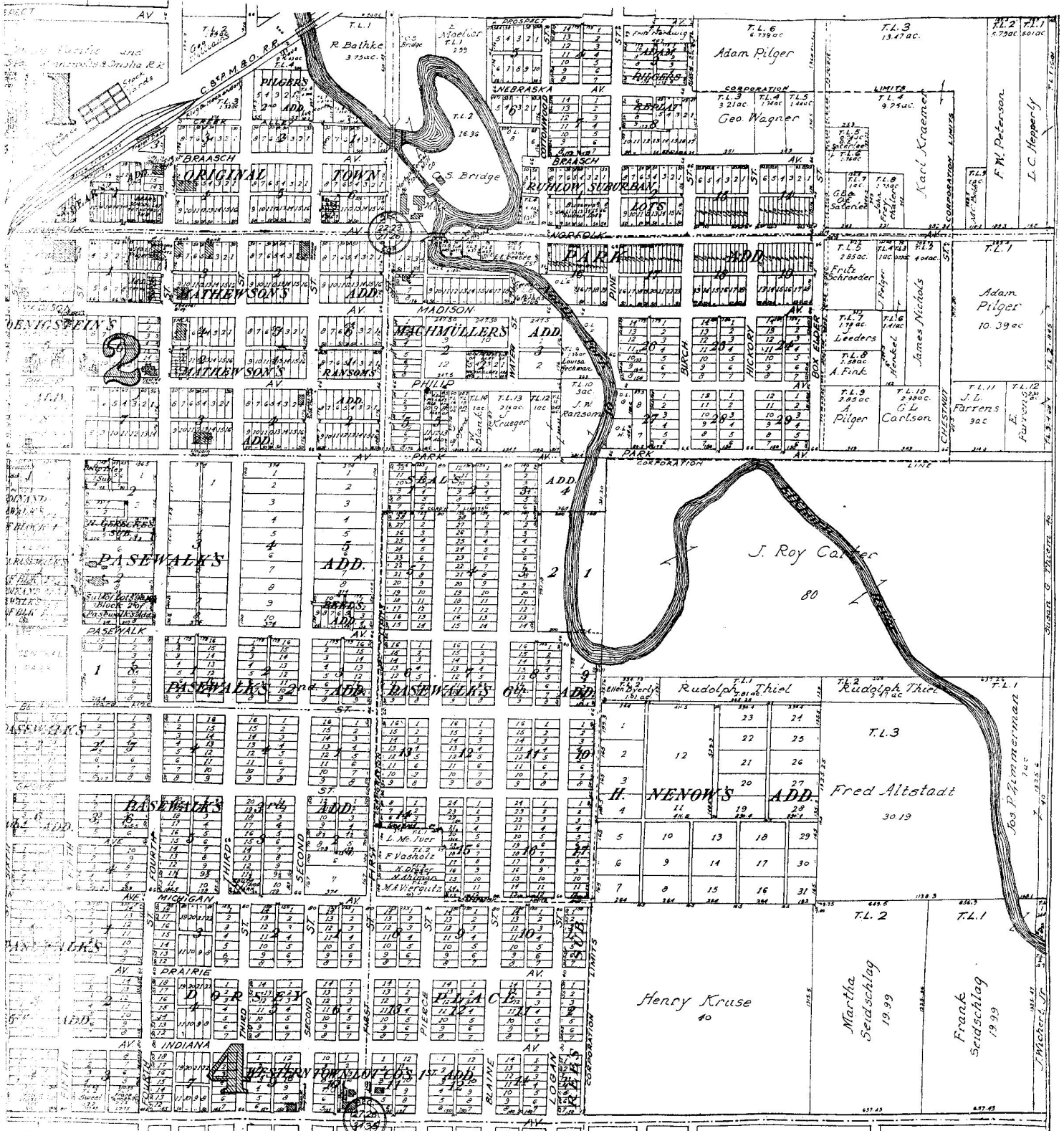
5 Aug Johnson  
180

Alfred Nelson  
244

40

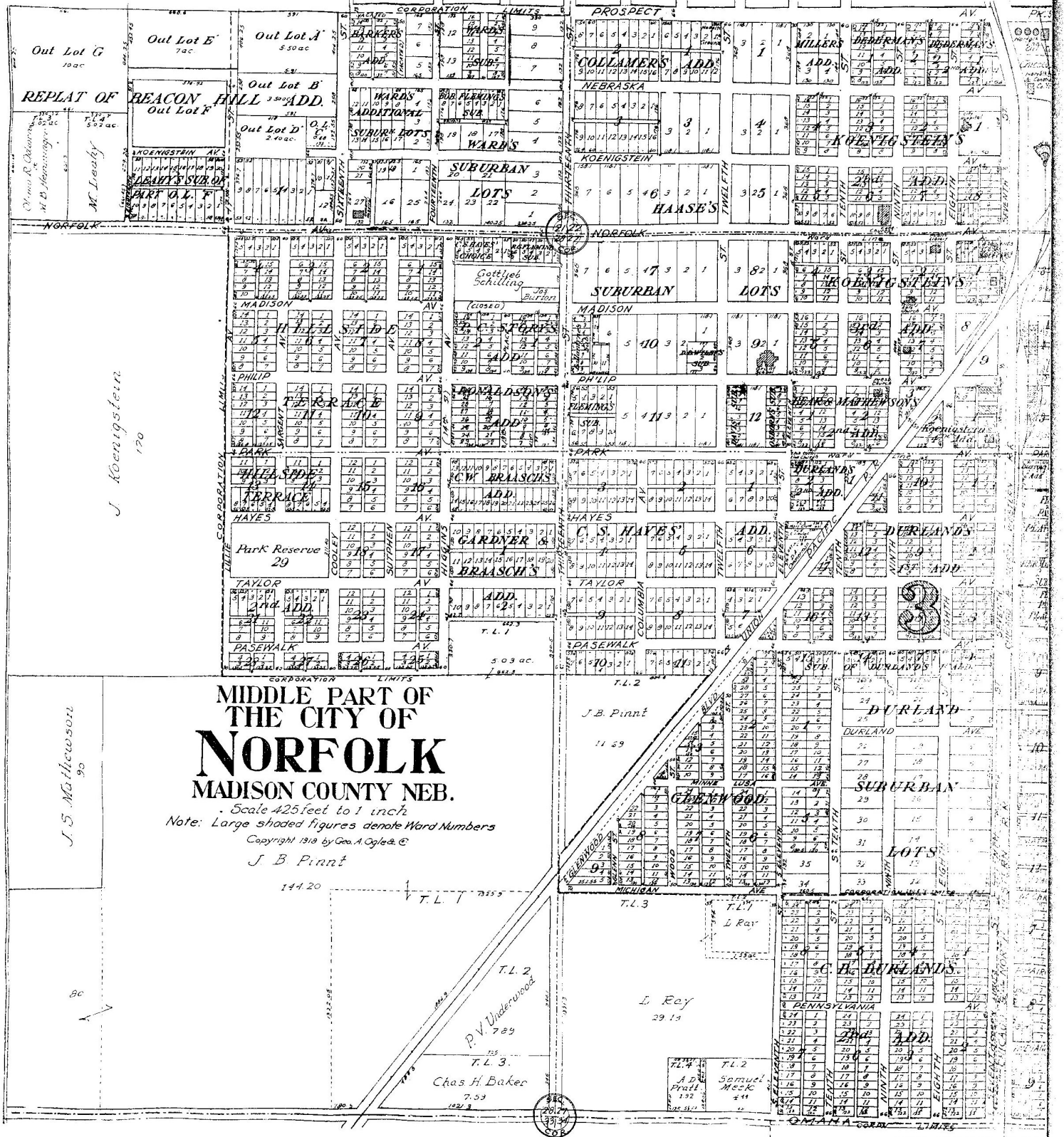


6ES 18 AND 19



SEE PAGES 26 AND 27

FOR NORTH PART SEE PA

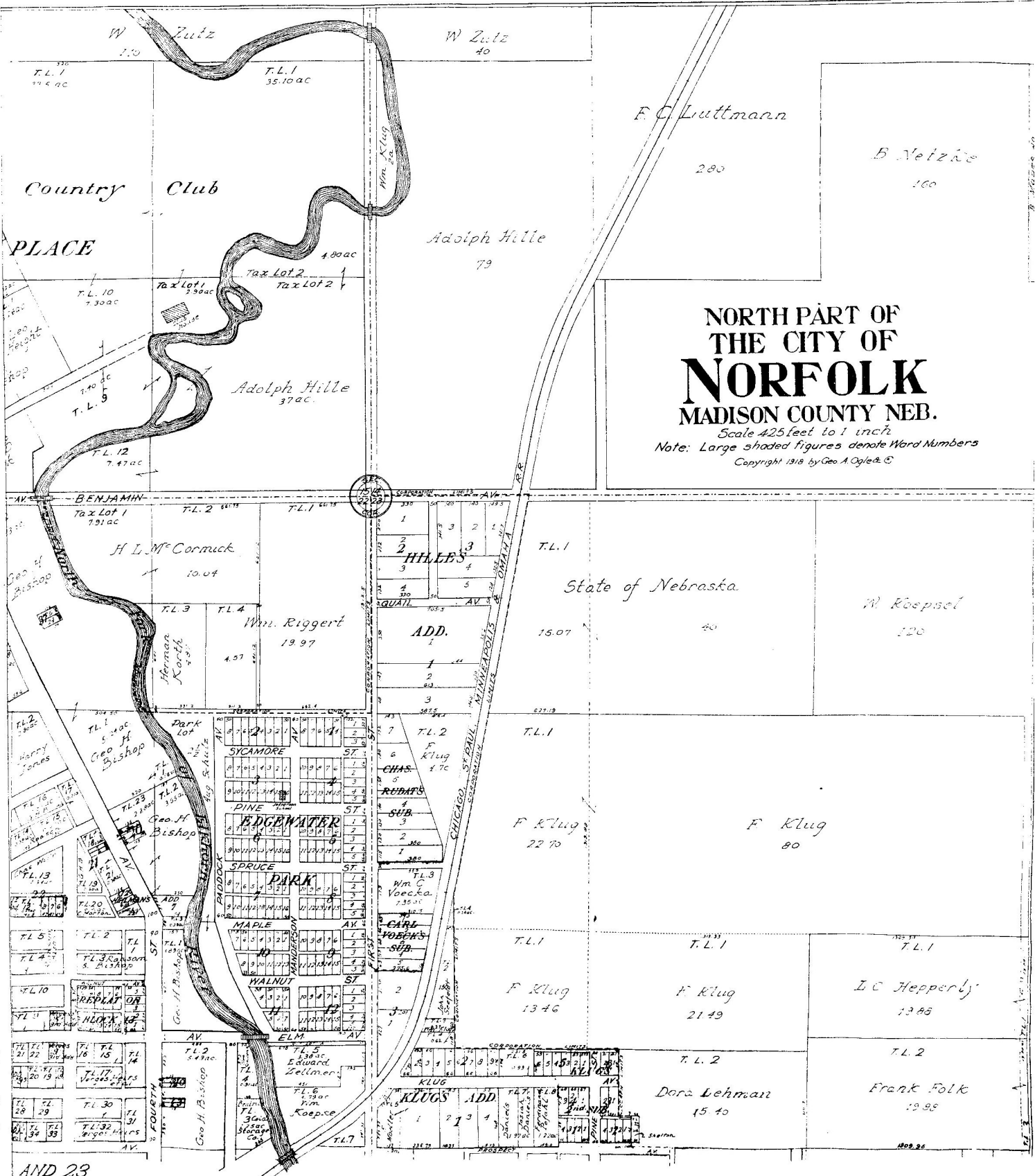


MIDDLE PART OF  
THE CITY OF  
**NORFOLK**  
MADISON COUNTY NEB.

Scale 425 feet to 1 inch  
Note: Large shaded figures denote Ward Numbers  
Copyright 1918 by Geo. A. Ogles & Co.

J. B. Pinnit

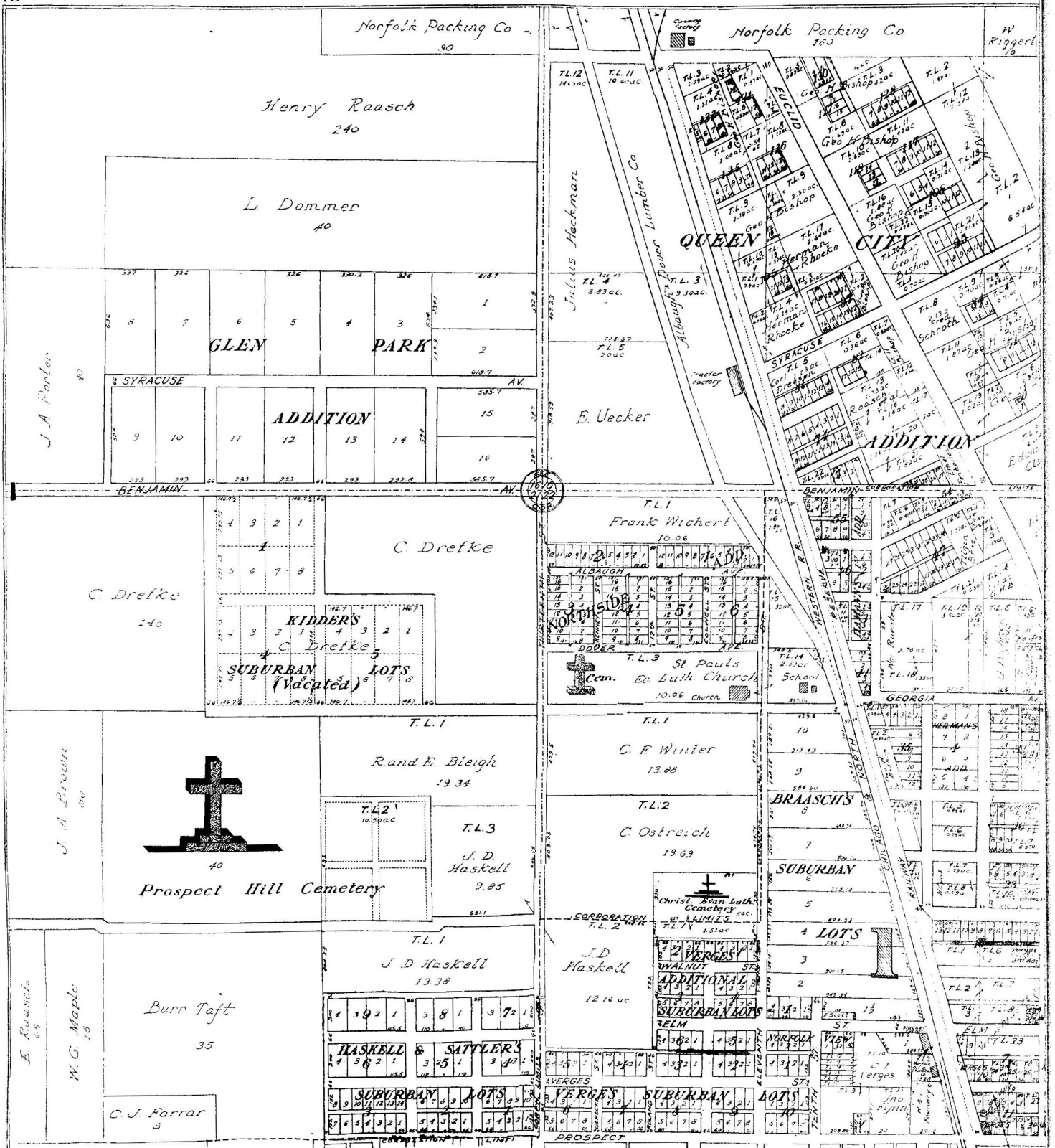
FOR SOUTH PART



NORTH PART OF  
THE CITY OF  
**NORFOLK**  
MADISON COUNTY NEB.

Scale 425 feet to 1 inch  
Note: Large shaded figures denote Ward Numbers  
Copyright 1918, by Geo. A. Ogle & Co.

AND 23



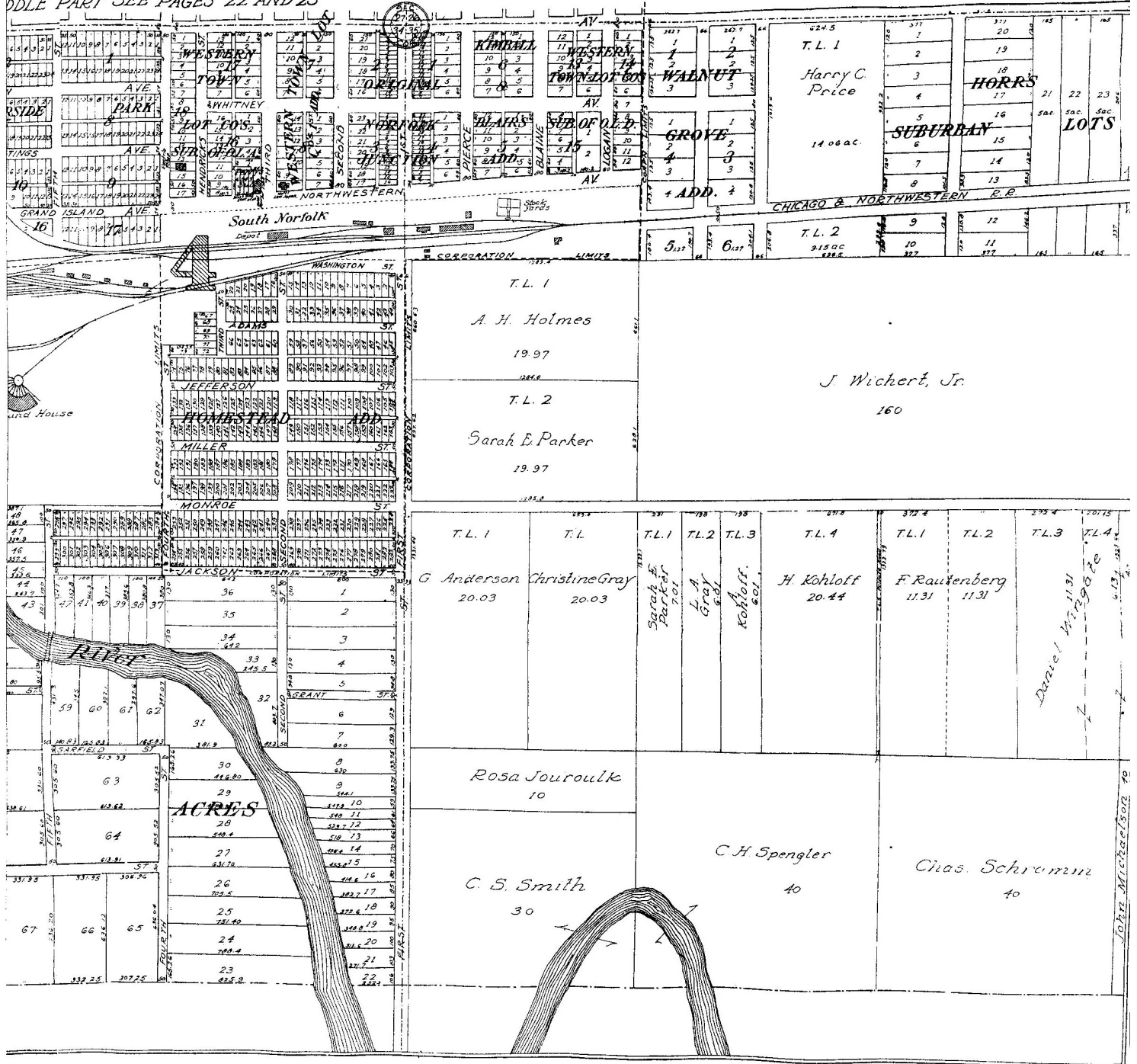
FOR MIDDLE PART SEE PAGES 20



PART OF  
CITY OF  
**FOLK**  
COUNTY NEB.

Scale 1 inch  
Figures denote Ward Numbers  
By Geo. A. Ogletree & Co.

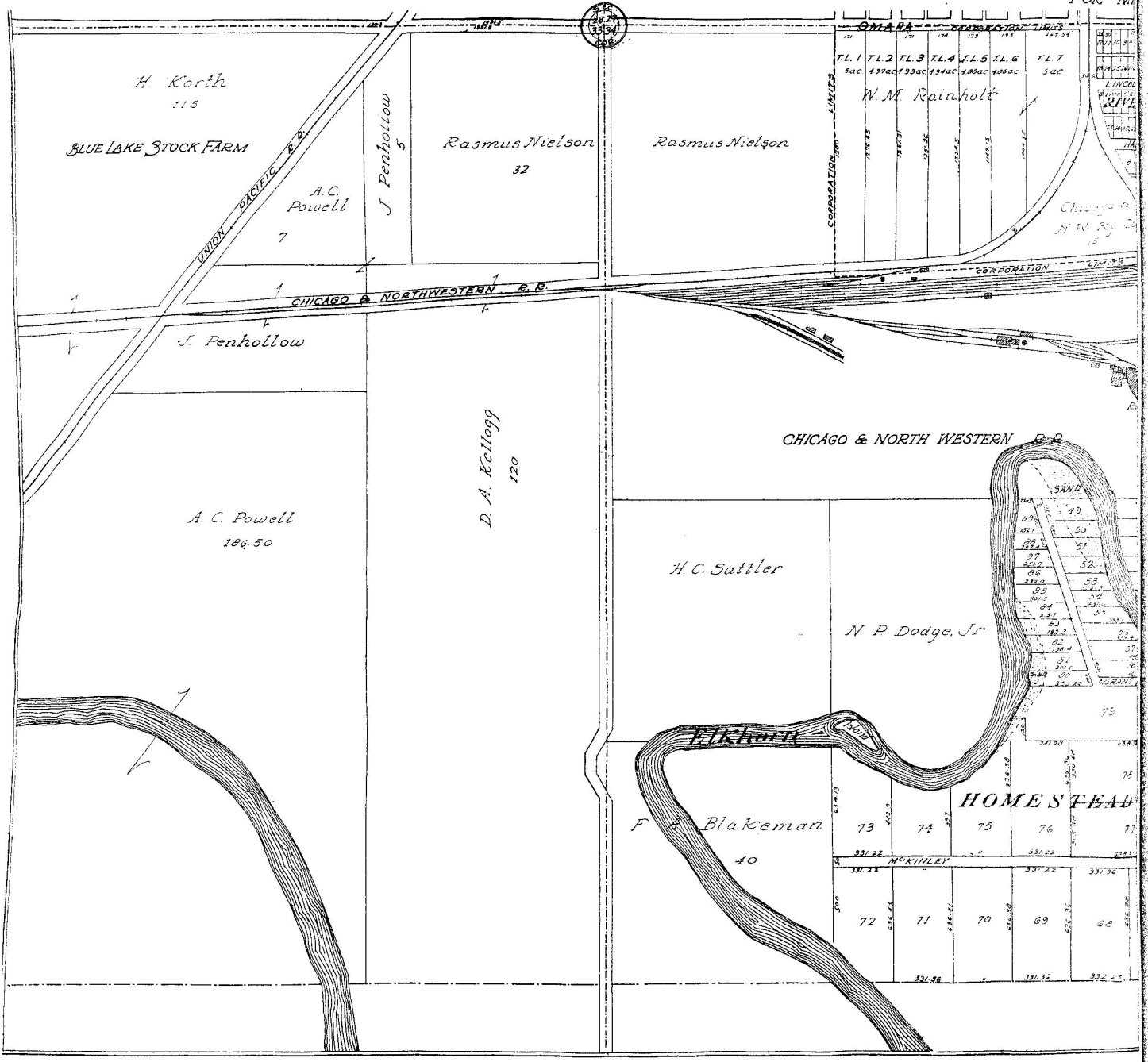
DOUBLE PART SEE PAGES 22 AND 23

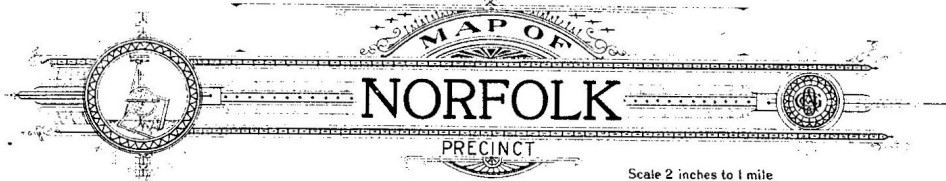


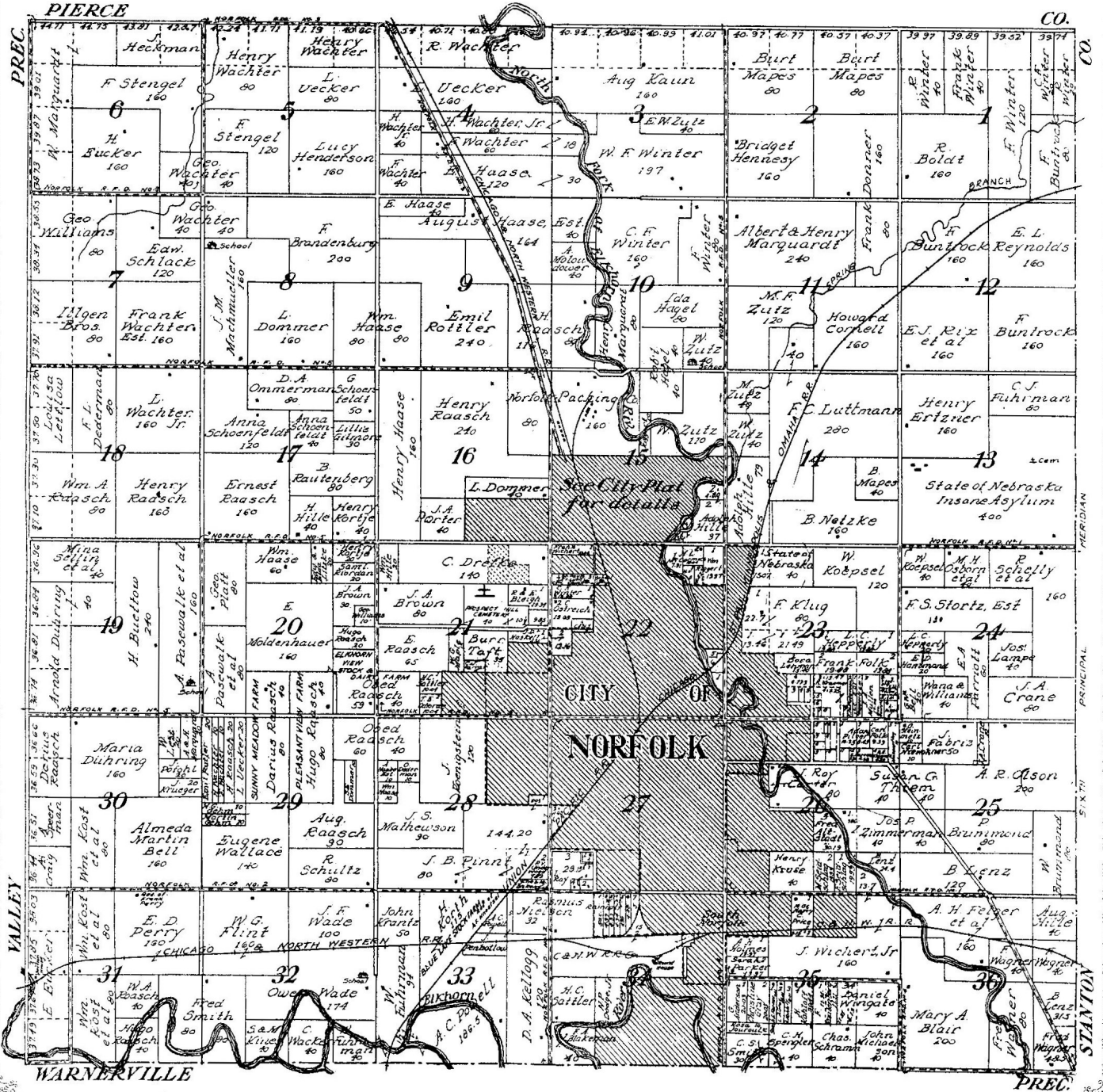
SOUTH  
THE  
**NOR**  
MADISON

Scale 425'  
Note: Large shaded  
Copyright 18

FOR M



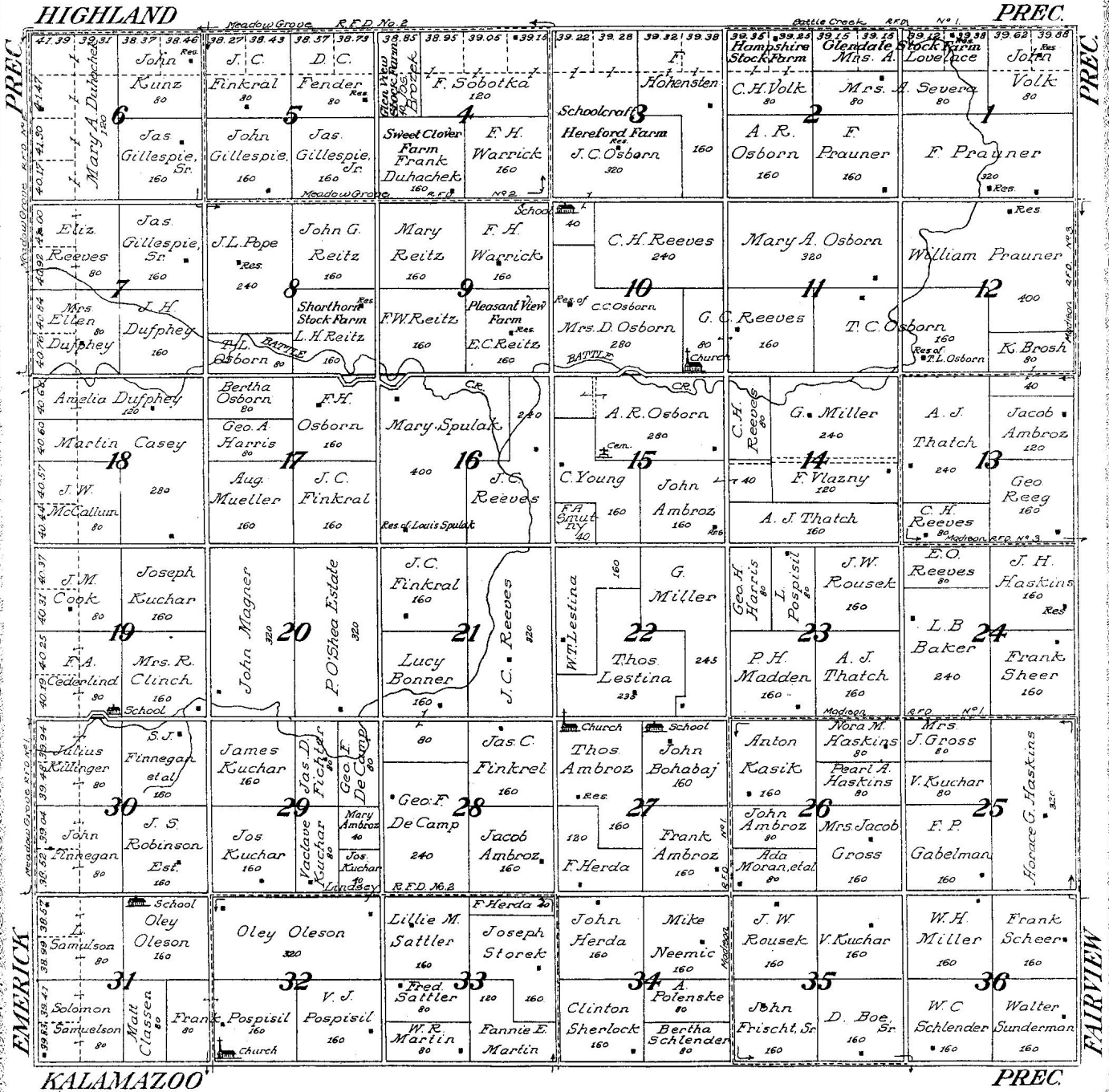

  
**MAP OF**  
**NORFOLK**  
 PRECINCT  
 Scale 2 inches to 1 mile  
 Township 24 North, Range 1 West of the 6th P. M.



MAP OF  
**SCHOOLCRAFT**  
PRECINCT

Scale 2 inches to 1 mile

Township 22 North, Range 3 West of the 6th P. M.



PREC.

PREC.

FAIRVIEW

EMERICK

KALAMAZOO

PREC.

# MAP OF SHELL CREEK PRECINCT

Scale 2 inches to 1 mile

Township 21 North, Range 4 West of the 6th P. M.

EMERICK

PREC.

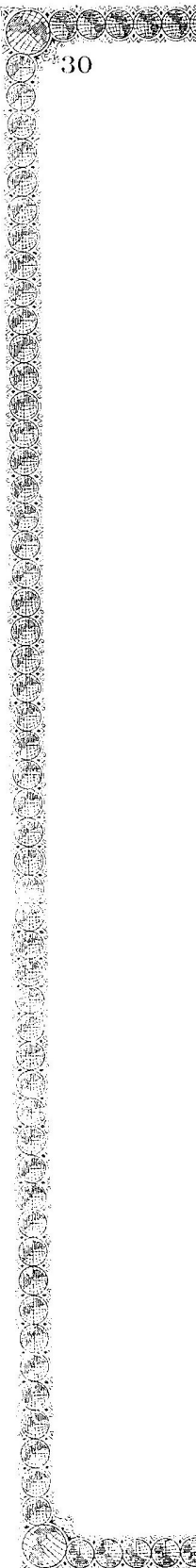
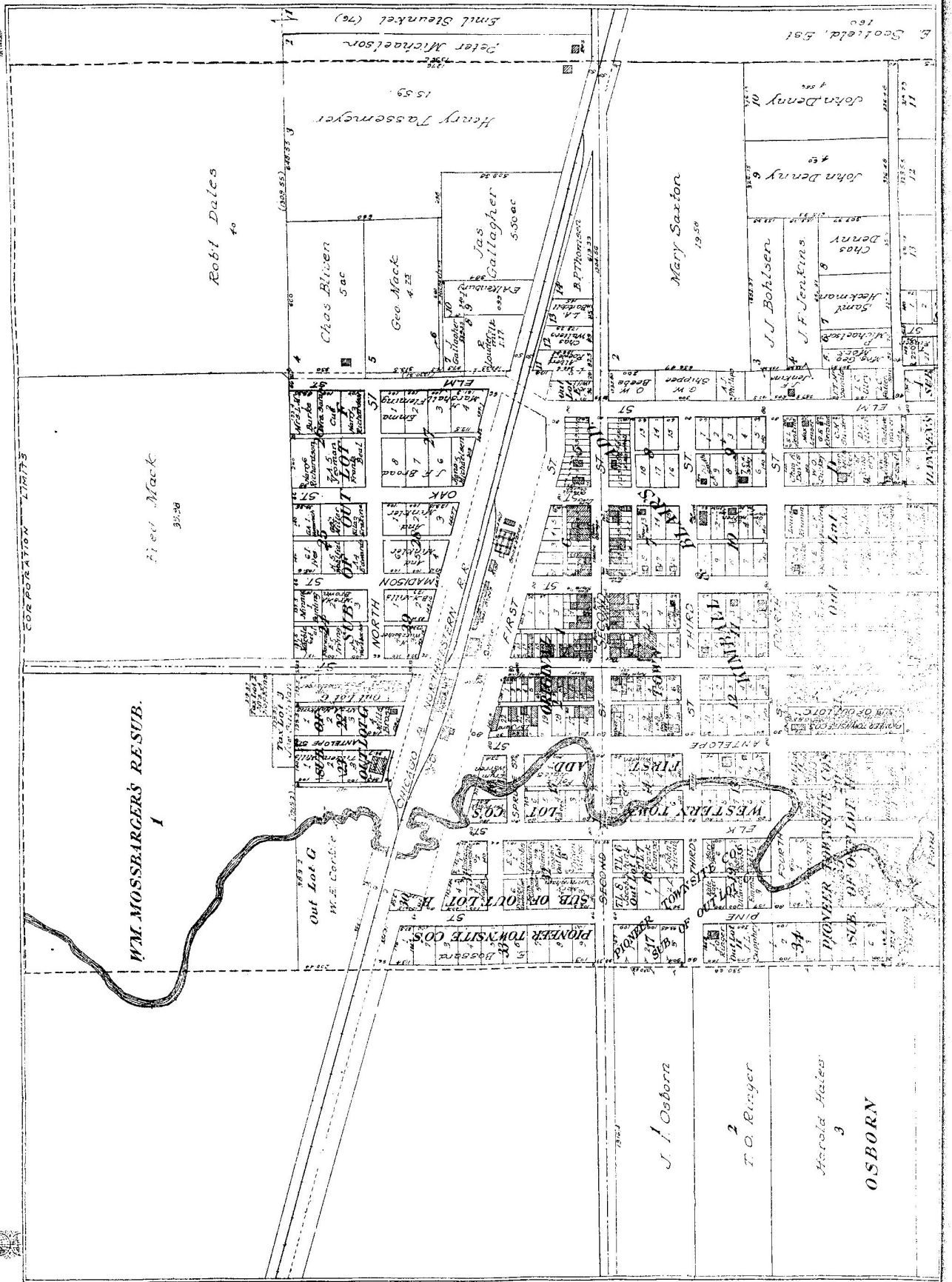


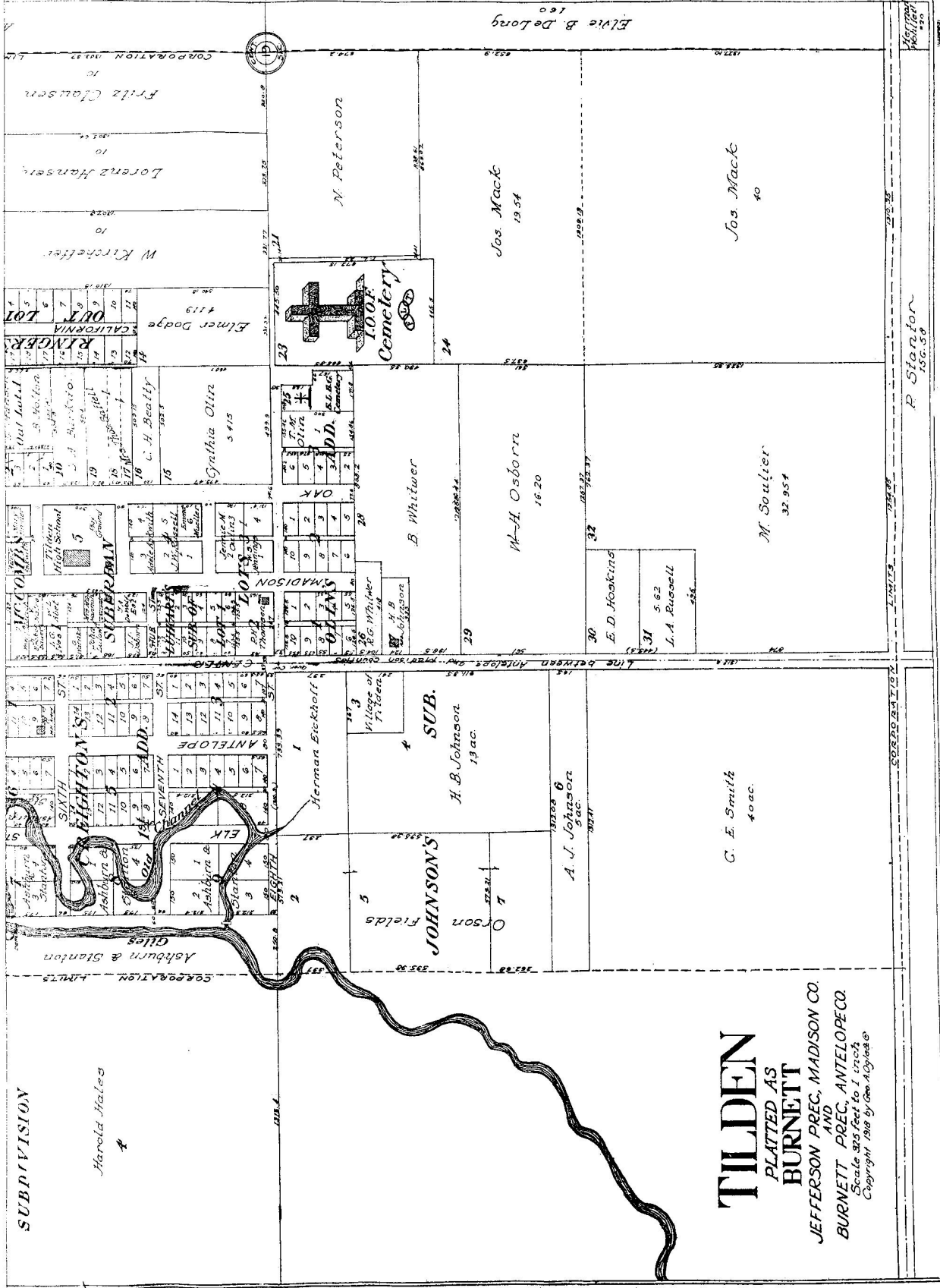
PLATTE

CO.

PREC.

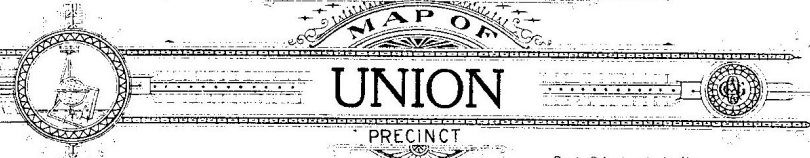
KALAMAZOO



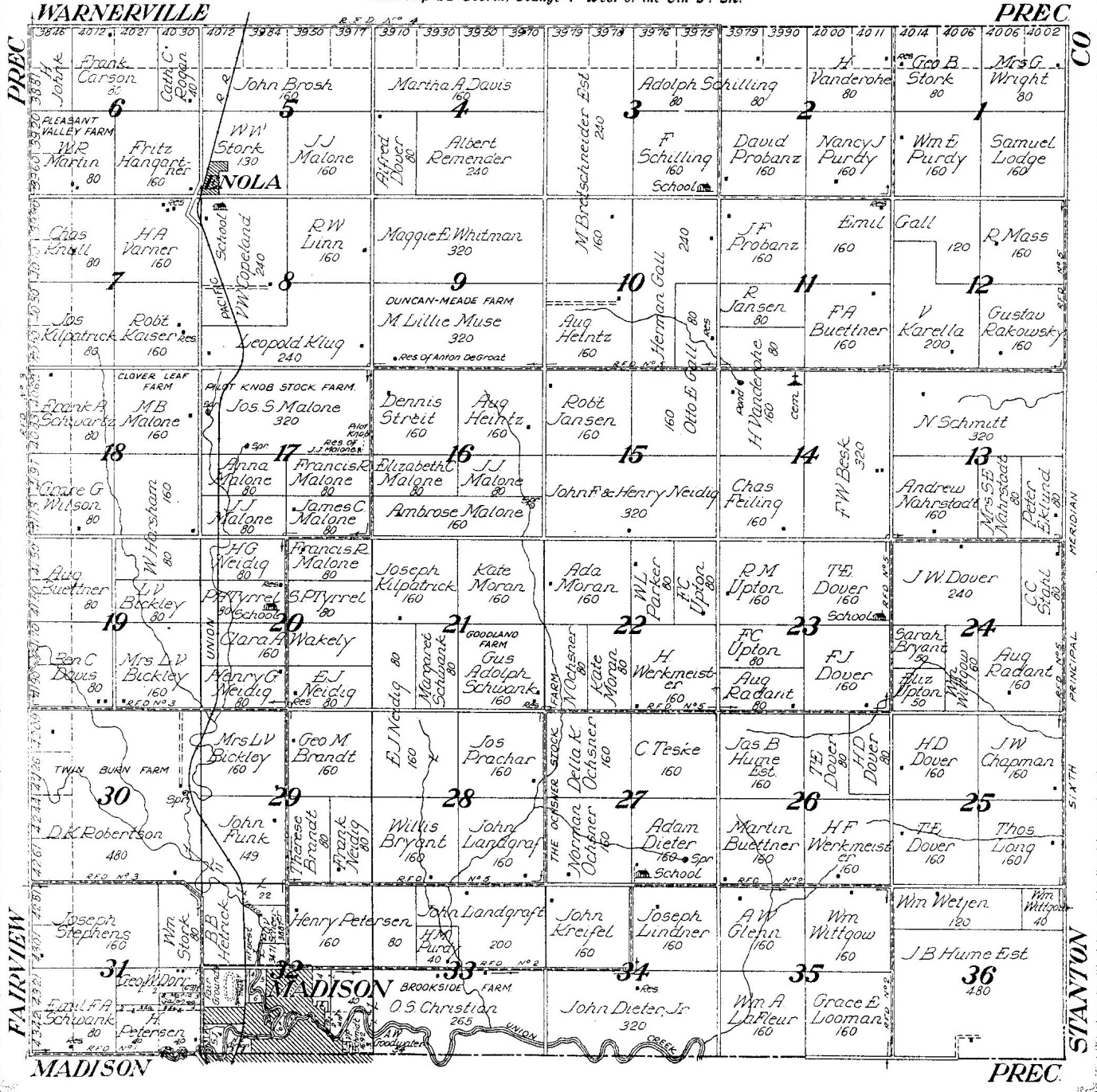


**TILDEN**  
 PLATTED AS  
**BURNETT**  
 AND  
 JEFFERSON PREC, MADISON CO.  
 BURNETT PREC, ANTELOPE CO.  
 Scale 300 feet to 1 inch  
 Copyright 1918 by Geo. A. O'Neil

Harold Hales  
 Ashburn & Stanton  
 GILES  
 SIXTH  
 EIGHTH  
 SEVENTH  
 ANTELOPE  
 ELK  
 Johnson's  
 H. B. Johnson  
 A. J. Johnson  
 C. E. Smith  
 Orson Fields  
 JOHNSON'S  
 H. B. Johnson  
 A. J. Johnson  
 C. E. Smith  
 E. D. Hoskins  
 J. A. Russell  
 M. Soulier  
 M. H. Osborn  
 B. Whitwer  
 Gyathia Olin  
 Elmer Dodge  
 W. Kirshelner  
 Lorenz Hansens  
 Fritz Clausen  
 N. Peterson  
 Jos. Mack  
 Jos. Mack  
 R. Stanton  
 LIMITS  
 CORPORATION LIMITS


  
**MAP OF**  
**UNION**  
 PRECINCT  
 Scale 2 inches to 1 mile

Township 22 North, Range 1 West of the 6th P. M.





# MAP OF VALLEY PRECINCT

Scale 2 inches to 1 mile

Township 24 North, Range 2 West of the 6th P. M.

PIERCE

CO



DEER CREEK

BATTLE CREEK

NORFOLK

PREC.

